

**7 Bulbine Place BEVERIDGE VIC**

3 2 2

Wilson Partners is proud to present 7 Bulbine Place, Beveridge. Located in a quiet and growing pocket of Beveridge, presents a fantastic opportunity to secure a stylish, low-maintenance home perfect for first home buyers, downsizers or investors.

This well-appointed residence features three bedrooms, including a master suite complete with walk-in robe and private ensuite, while the remaining bedrooms are fitted with built-in robes and serviced by a central bathroom.

The heart of the home showcases a light-filled open plan living and dining area, complemented by a contemporary kitchen featuring stone benchtops and sleek matte black finishes. Sliding doors provide seamless access to an undercover alfresco area, ideal for year round entertaining.

**Type** : House  
**Price** : \$580,000 - \$620,000  
**Land Size** : 350 sqm  
**View** : <https://www.wilsonpartners.com.au/8685181>

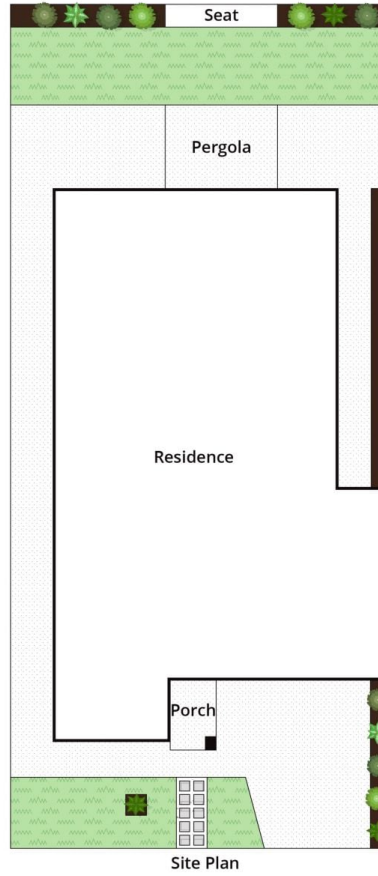
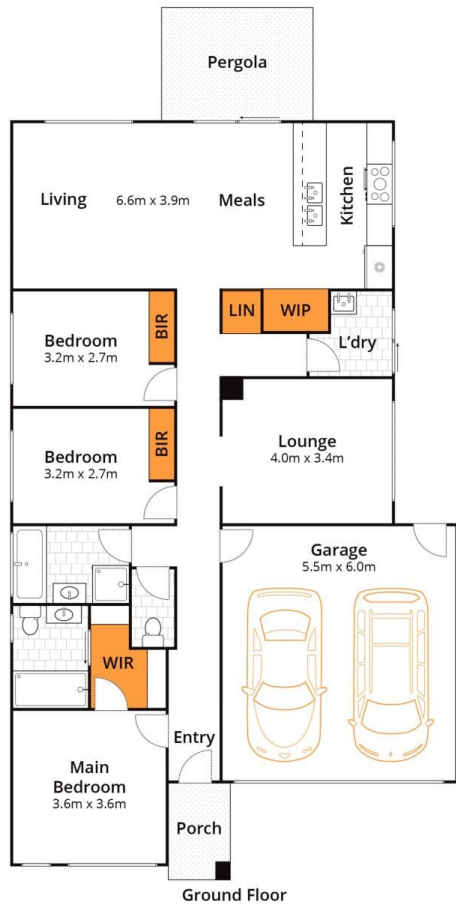


**Georgina Smith**  
0490663721



**Riley Evans**  
0418968815

[For full version visit the website](https://www.wilsonpartners.com.au)



Whilst [bwrn.com.au](http://bwrn.com.au) has made every attempt to ensure the accuracy of the floor plan contained here, measurements are approximate and no responsibility is taken for any error, omission, or mis-statement. This plan is for illustrative purposes only.

## 7 Bulbine Place, Beveridge

**Wilson Partners** | Who Sold It?®