



28 Cottage Crescent KILMORE VIC

4 2 2

Wilson Partners is proud to present 28 Cottage Crescent, Kilmore.

Set on a generous near ¼-acre allotment in the highly sought-after Willowmavin Estate, this solid brick residence delivers exceptional space, comfort, and family-friendly living both indoors and out.

The home comprises four well-proportioned bedrooms and two bathrooms, ideal for growing families or those who value room to move. Two separate living zones offer flexibility for everyday living and entertaining, while timber flooring throughout adds warmth and timeless appeal.

At the heart of the home, the neutral-toned kitchen provides

Type : House
Price : \$ 625,000
Land Size : 970 sqm
View : <https://www.wilsonpartners.com.au/8680416>

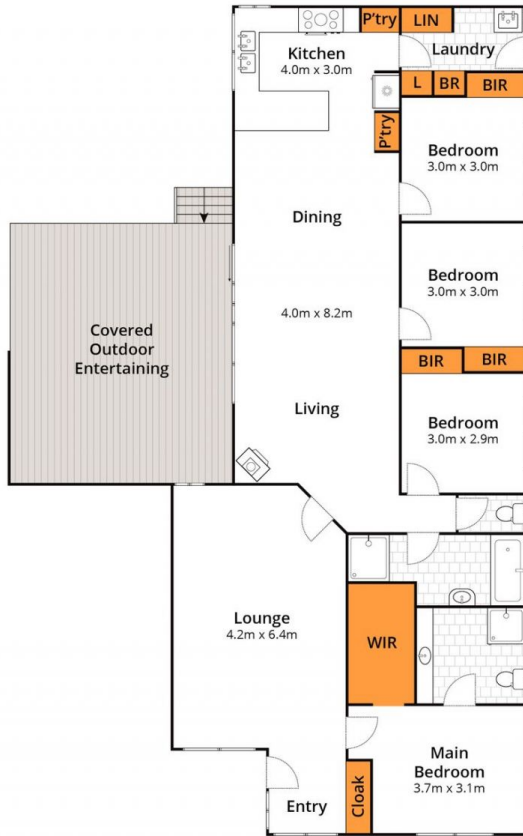


Georgina Smith
0490663721

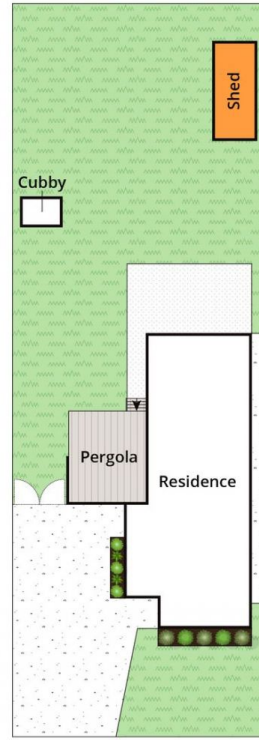


Riley Evans
0418968815

[For full version visit the website](https://www.wilsonpartners.com.au)



Ground Floor



Site Plan



Whilst bwrn.com.au has made every attempt to ensure the accuracy of the floor plan contained here, measurements are approximate and no responsibility is taken for any error, omission, or mis-statement. This plan is for illustrative purposes only.

28 Cottage Crescent, Kilmre

Wilson Partners | Who Sold It?®