



10 Hakea Street BROADFORD VIC

3 2 2

Wilson Partners is proud to present 10 Hakea Street, Broadford.

10 Hakea is a great opportunity for families and keen investors, offering a generous block sitting on over 700sqm and a well-designed home, 10 Hakea has a strong street presence and full side access, making it easy to store extra vehicles, trailers, or even a boat.

Located in the growing town of Broadford, the property offers a good mix of space, comfort, and future potential. The area is continuing to develop, making it a solid option for families and investors alike.

Inside, the home is practical and easy to live in. There are

[For full version visit the website](https://www.wilsonpartners.com.au/8680396)

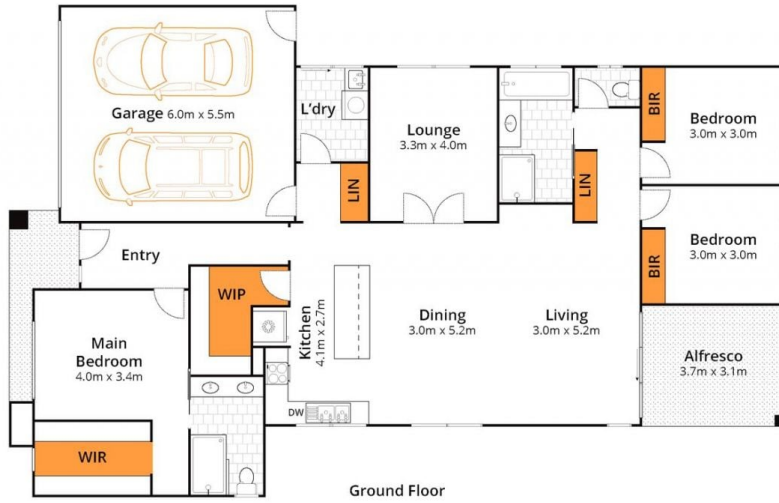
Type : House
Price : \$ 615,000
Land Size : 703 sqm
View : <https://www.wilsonpartners.com.au/8680396>



Riley Evans
0418968815



Georgina Smith
0490663721



Whilst bwrm.com.au has made every attempt to ensure the accuracy of the floor plan contained here, measurements are approximate and no responsibility is taken for any error, omission, or mis-statement. This plan is for illustrative purposes only.

10 Hakea Street, Broadford

Wilson Partners | Who Sold It?®