



8/38 Corkwood Crescent WALLAN VIC

3 2 1

Wilson Partners is proud to present 8/38 Corkwood Crescent, Kilmore.

For investors seeking security, stability, and an immediate return, this opportunity ticks all the right boxes. Offered with A+ tenants already in place on a fixed 18-month lease, this property delivers a strong 5.15% return, making it the perfect set-and-forget addition to any savvy portfolio.

This very young home has been thoughtfully designed for modern living and low-maintenance appeal. The master bedroom sits privately at the front of the home and is complete with a walk-in robe and stylish ensuite, while the remaining bedrooms are generous in size, each featuring built-in robes and serviced by the central main bathroom.

Type : Unit
Price : \$ 475,000
Land Size : 200 sqm
View : <https://www.wilsonpartners.com.au/8680376>

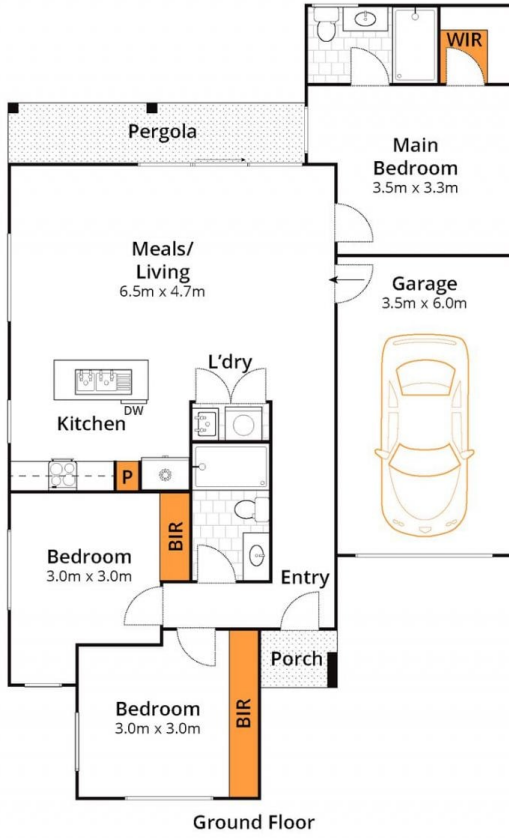


Georgina Smith
0490663721

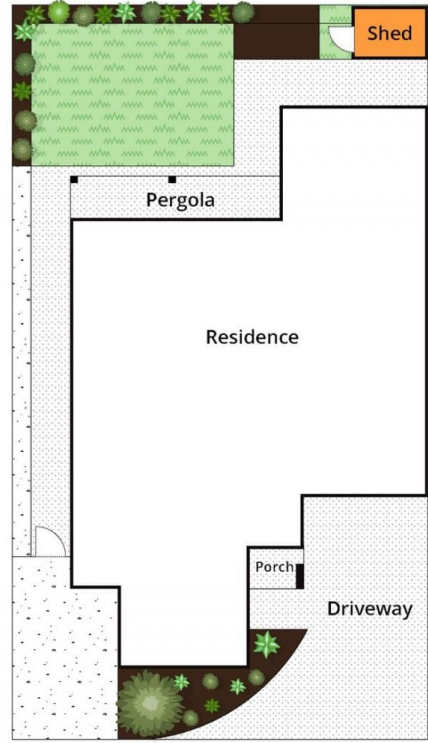


Riley Evans
0418968815

[For full version visit the website](https://www.wilsonpartners.com.au)



Ground Floor



Site Plan



Whilst bwrn.com.au has made every attempt to ensure the accuracy of the floor plan contained here, measurements are approximate and no responsibility is taken for any error, omission, or mis-statement. This plan is for illustrative purposes only.

8/38 Corkwood Crescent, Wallan

Wilson Partners | Who Sold It?®