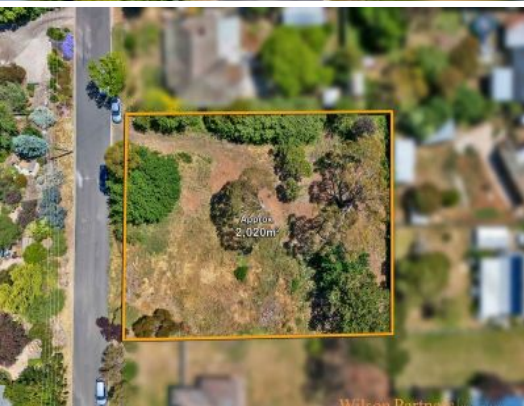


Wilson Partners | Who Sold It?



## 28-30 Church Street Kilmore, VIC

### Prime Development Opportunity

Wilson Partners is proud to present 28-30 Church Street, Kilmore.

A rare opportunity to invest in a block of land just over half an acre, perfectly situated within walking distance to the vibrant town center and all essential amenities. This prime location offers the ideal blend of convenience and potential, making it a standout choice for developers and investors alike.

With its generous size and favourable zoning, this land presents an exceptional chance to capitalise on the growing demand for quality housing in the region.

Disclaimer: We have obtained all information in this document from sources we believe to be reliable; however, we cannot guarantee its accuracy. Prospective purchasers/lessees are

**Georgina Smith**

0490 663 721