



Wilson Partners Who Sold It?



76 Tootle Street Kilmore, VIC



A Place for Everyone

Wilson Partners is proud to present 76 Tootle Street, Kilmore.

Step inside and be greeted by a grand entrance that sets the tone for the rest of the home. A spacious design with three bedrooms and 2 bathrooms. The two large living areas provide ample space for relaxation and entertainment, while the study offers a quiet retreat as a home office. Stay comfortable all year round with the convenience of 2 split systems and ducted heating.

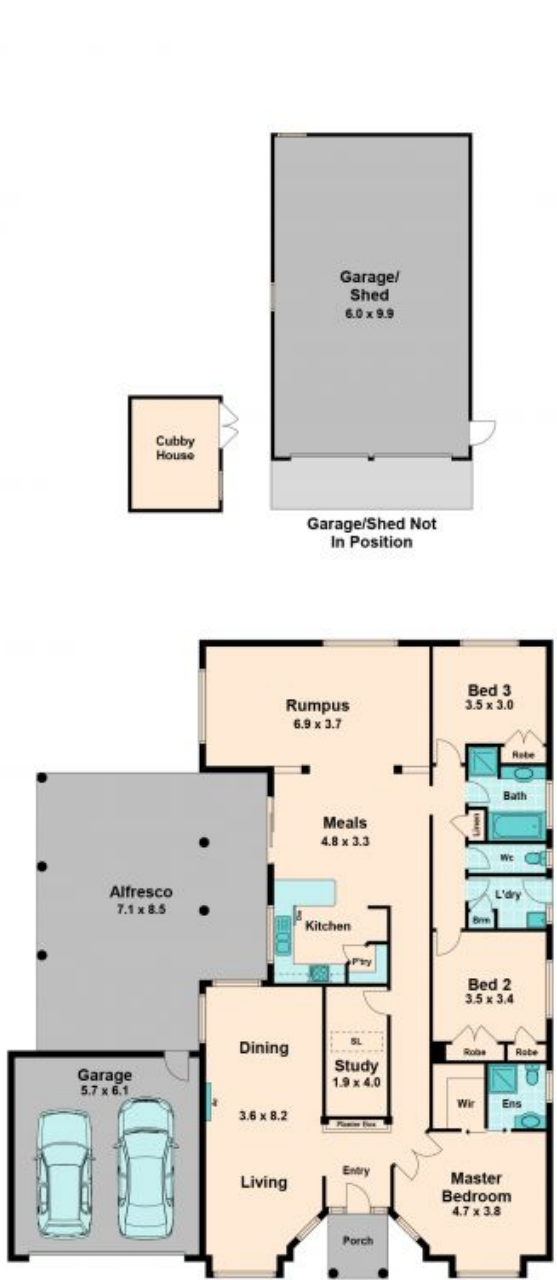
The kitchen/meals area is expansive and offers durable glossed tiles. The kitchen is practicable and functional with a spacious pantry and overlooks the outdoor entertaining area.

Outside, you'll find lovely neat gardens that create a welcoming atmosphere, along with a large undercover entertaining zone that is the ideal area for hosting gatherings with family.

Georgina Smith

0490 663 721

www.wilsonpartners.com.au



Land Size
2293m²
Approx



76 Tootle Street

Kilmore, VIC