



36A Sydney Street Kilmore, VIC

Versatile Space

Wilson Partners is proud to present 36A Sydney Street, Kilmore.

This commercial space of approximately 250m² is ideal for a multitude of tenancies including; office space, retail and much more.

Located on the main street and tucked behind the well known Odd Fellows Cafe, this prime retail opportunity is seeking a new business to reside and settle for years.

Access: Mill Street Mall via Sydney Street and Mitchell Street

Features:

- Recently installed fully equipped kitchen
- Bathroom facility
- Huge mezzanine floorspace upstairs; carpeted, ample power points installed and ready to

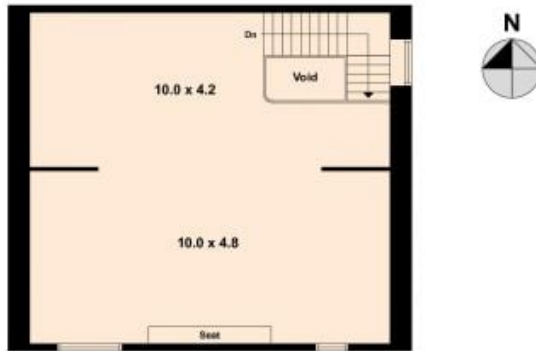
Council Rates: \$235.00 p/q

Water Rates: \$220.00 p/q

Georgina Smith

0490 663 721

www.wilsonpartners.com.au



Second Floor



Ground Floor

First Floor

36A Sydney Street

Kilmore, VIC