



135 High Street Broadford, VIC



Circa 1860's Charm

This circa 1860's cottage sits on an outstanding 1600m² allotment (approx) and is well known to the locals of Broadford.

Broadford shares its Towns history on the main Street featuring The Hume and Hovell Centenary Monument and The Historical Building Museum from our towns past.

Extended features of this home include, privately fenced yard, single carport, shedding and private art studio.

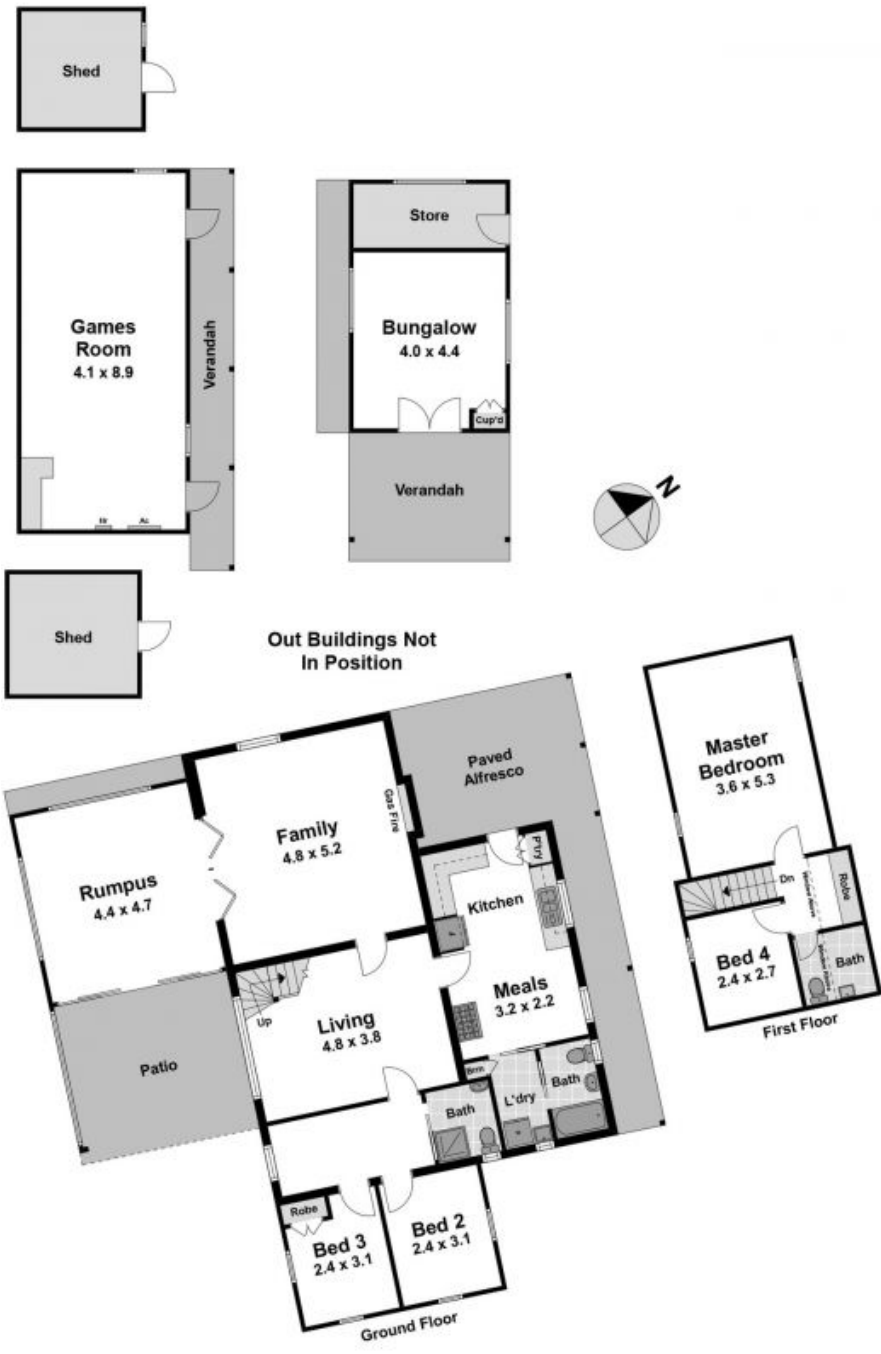
This home is looking for someone to embrace its history and restore her beauty.

Disclaimer: We have obtained all information in this document from sources we believe to b

Bianca Thomas

0425 733 651

www.wilsonpartners.com.au



135 High Street

Broadford, VIC