



54 Melbourne Street Kilmore, VIC

### Looking to expand your portfolio?

Wilson Partners Real Estate Kilmore, is proud to present 54 Melbourne Street.

This property is an amazing investment opportunity for the potential developer looking to expand their portfolio.

Situated on approximately 597m<sup>2</sup> with plans and permits for four units.

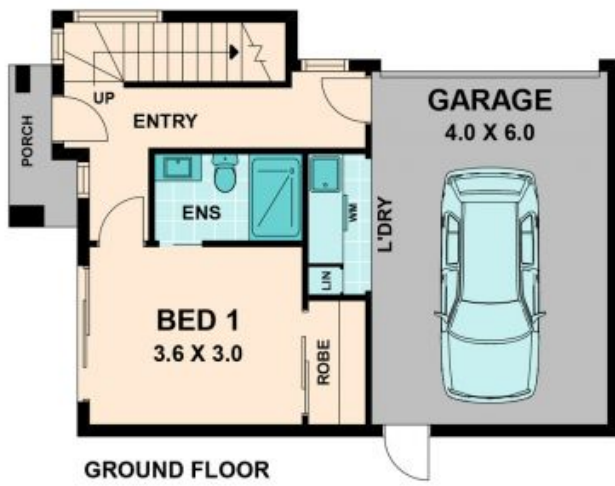
The 4 Unit complex will provide a steady rent return and would be appealing to tenants and prospective purchasers with location being the key.

This property is perfectly positioned being only a five minute walk to the main shopping precinct, a five minute drive to Kilmore East train station and a 1 hour drive to Melbourne CBD. Living in the country has never been more convenient.

Disclaimer: We have obtained all information in this document from sources we believe to be reliable; however, we cannot guarantee its accuracy. Prospective purchasers/lessees are advised to carry out their own investigations.

**Georgina Smith**

0490 663 721



GROUND FLOOR

UNIT 1



FIRST FLOOR