



3179 Epping-Kilmore Road WANDONG, VIC



Family Residence On 5 Blissful Acres With Plans For Subdivision

Quietly set upon 5 usable acres, this lovingly maintained four-bedroom family home offers a comfortable family lifestyle ready to move in now and enjoy with exciting possibilities for the future.

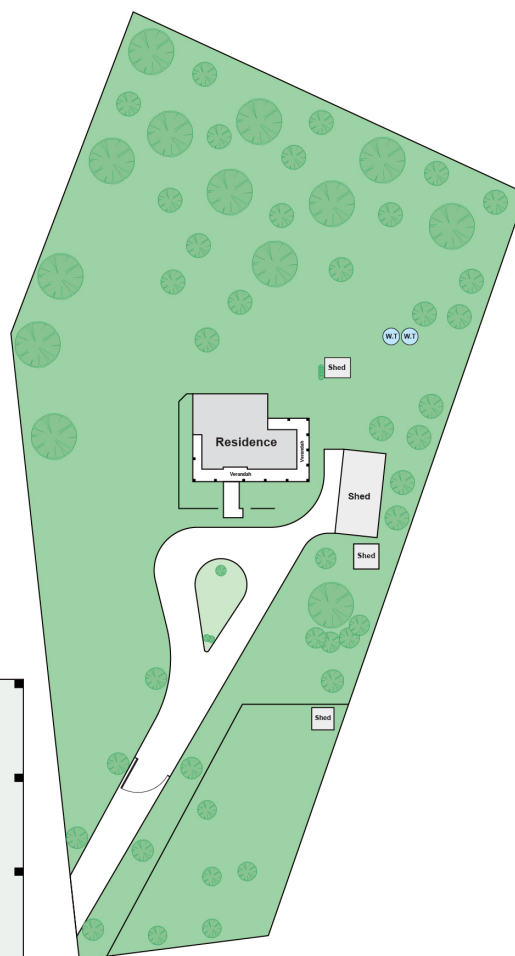
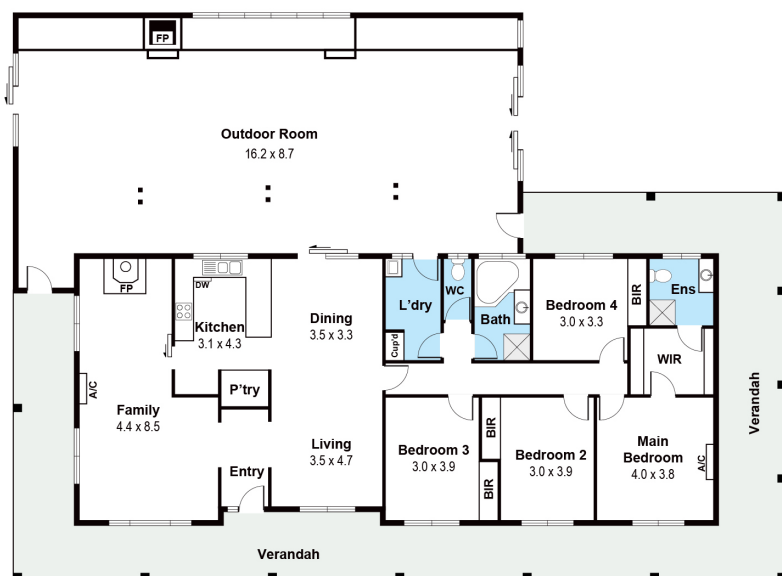
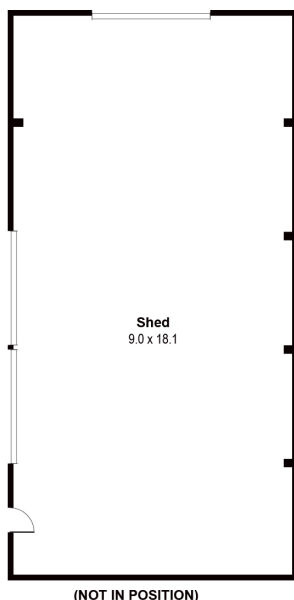
Offered with all plans, reports and surveys completed and ready for submission to Council for a four lot subdivision, the scope for this property is boundless. With updated interiors and a flexible floorplan designed for grand-scale family living, the home presents confidently with a welcoming verandah introducing zoned family living and entertaining with a well-presented central kitchen offering large pantry, quality appliances and plenty of bench space. The accommodations wing provides peace and relaxation with four spacious robed bedrooms with a master suite highlighted by walk-in robe and full ensuite. A central bathroom with separate bath and shower, family-sized laundry, Coonara fireplace, ceiling fans, split system heating/cooling and plenty of off-street parking complete the offering with added features of a mammoth outdoor room with wood log fire providing so much space for acti

www.wilsonpartners.com.au



Approx. Measurements

Internal Living	177 sqm
Outdoor Room	128 sqm
Shed	163 sqm
Total	454 sqm



3179 Epping-Kilmore Road, Wandong 3758

Whilst every attempt has been made to ensure the accuracy of the floor plan contained here, measurements are approximate and no responsibility is taken for any error, omission or misstatement. This plan is for information only and should not be used as a basis for any prospective purchase or sale of the property.

3179 Epping-Kilmore Road WANDONG, VIC

Wilson Partners