



8 Solomon Way BEVERIDGE, VIC



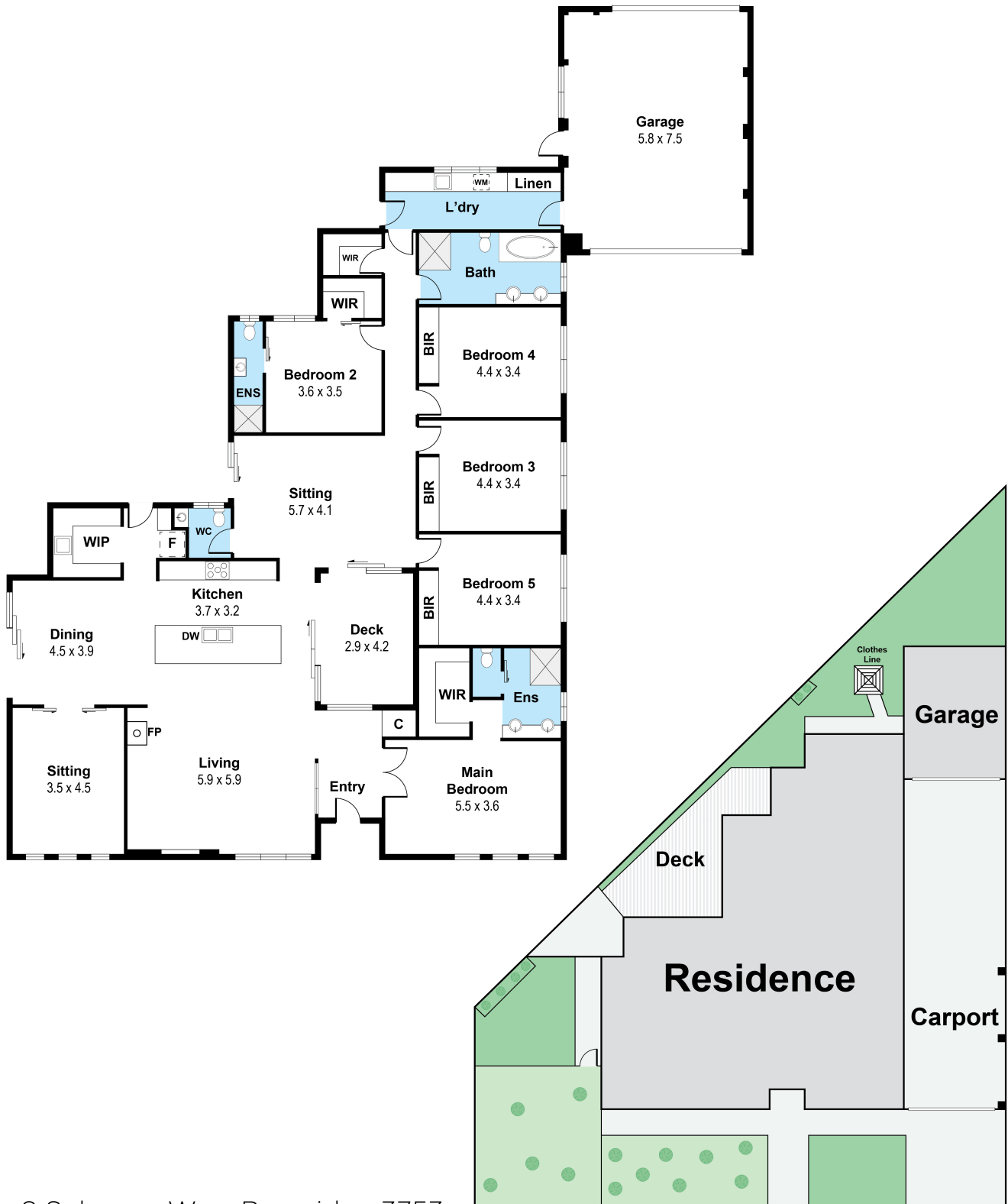
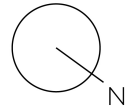
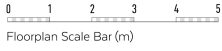
## Sublime, Bespoke Luxury Tailored To Grand Family Living In Style

Framed by a stately facade and showcasing a refined lifestyle of low maintenance living on a grand scale, delight in the fine selection of living and entertaining zones, the breathtaking design, custom finishes and coveted address that defines this exceptional family home.

Offering unsurpassed bespoke luxury and comfortable family living, this spaciouly grand single level residence rises to the occasion from its preferred Mandalay Estate position to offer five double bedrooms and three impeccably presented bathrooms. Revel in the serenity of a privately zoned master suite with walk-in robe and full ensuite, and a further four bedrooms, including second master with ensuite, zoned perfectly for guest accommodations. A dream home for large-scale entertaining, the dining/family room flaunts a connoisseur's kitchen with Smeg appliances, butler's pantry and expansive stone island, and complements the adjacent rumpus room and central courtyard beautifully. A private placed study provides a fantastic work from home space, and the home offers loads of storage, powder room, fa

[www.wilsonpartners.com.au](http://www.wilsonpartners.com.au)

Total Approx. Floor Area 305sqm



8 Solomon Way, Beveridge 3753

Whilst every attempt has been made to ensure the accuracy of the floor plan contained here, measurements are approximate and no responsibility is taken for any error, omission or misstatement. This plan is for **8 Solomon Way BEVERIDGE, VIC** and should be used as such by any prospective buyer.

**Wilson Partners**