



515 West Road PYALONG, VIC



Stunning Rural Views

Wilson Partners Real Estate Kilmore, is proud to presenting 515 West Road Pyalong for sale.

This is the perfect property for those wanting to experience the serenity of stunning rural views and country lifestyle.

Situated on approximately 23 acres and only a short 6 kilometres from Pyalong Town Center and an hour drive from Melbourne, you have the perfect balance of a rural lifestyle with the cities luxury's at your fingertips.

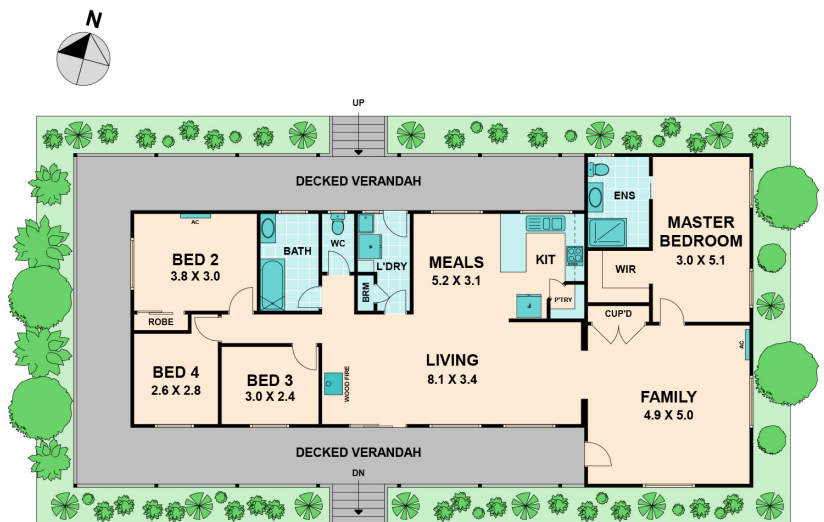
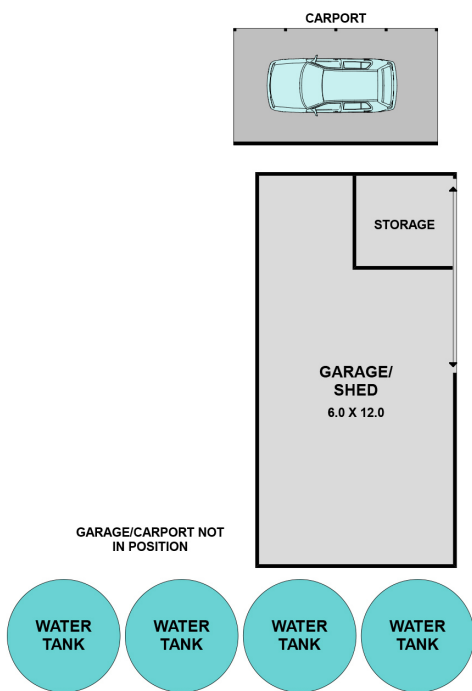
The property compromises a range of enticing features such wood heating, split systems, approximately 20K gallons of water tank storage, solar panels, two car garage with additional space for a workshop/storage, private orchard, spring fed dam and fully fenced private yard.

The property is perfectly located, providing privacy and stunning rural views.

Bianca L Thomas

+61 425 733 651

www.wilsonpartners.com.au



515 West Road

PYALONG, VIC