



9 Hawdon Street BROADFORD, VIC



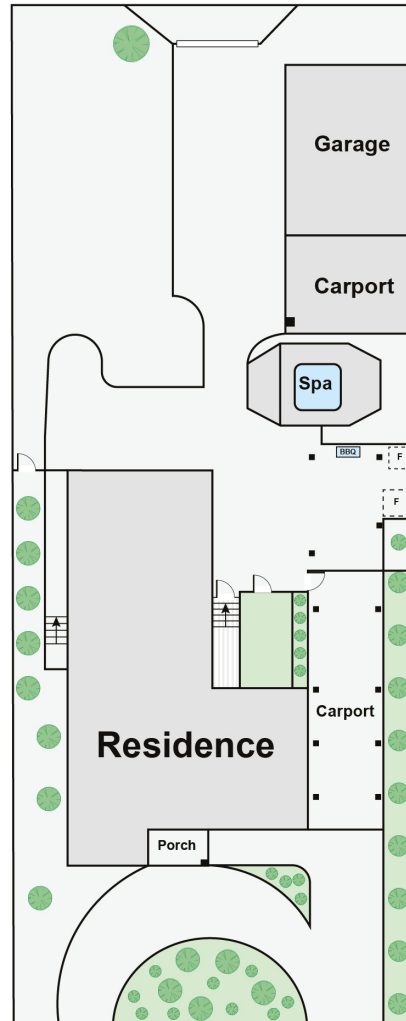
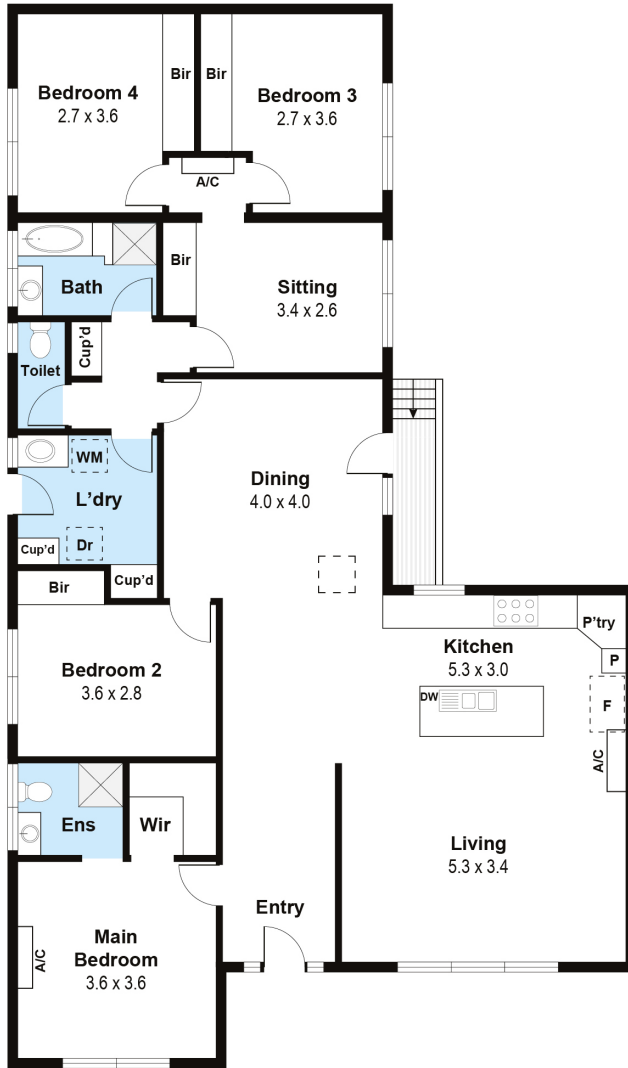
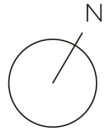
## Family Entertainer In Quiet Central Locale

Enjoying an appealing position in a quiet enclave, moments from village shops, recreation reserves, schools and transport, this classic single level brick home offers first home buyers, investors and families alike a splendid opportunity to make their mark in Broadford.

From the easy-care environs of an established front garden, a circular drive welcomes you into a well-presented home featuring four spacious bedrooms, including a master suite with walk-in robe and full ensuite. A flexible floorplan provides zoned living and entertaining with an updated central kitchen offering plenty of storage space, quality appliances and breakfast bar. A contemporary central bathroom services the home and offers separate bath, shower and WC with the added advantages of split system cooling, ducted heating and ceiling fans providing year-round comfort. A secure rear yard is complemented by ROW rear access and the added benefits of a substantial alfresco entertaining area and surrounding lawns for the children and pets to play, with a custom spa pavilion offering plenty of opportunity for rest and private relaxation. Other property features include a garage/workshop a

[www.wilsonpartners.com.au](http://www.wilsonpartners.com.au)

Total Approx. Floor Area 157sqm  
 0 1 2 3 4 5  
 Floorplan Scale Bar (m)



9 Hawdon Street, Broadford 3658

Whilst every attempt has been made to ensure the accuracy of the floor plan contained here, measurements are approximate and no responsibility is taken for any error, omission or misstatement. This plan is for information only and should not be used as such by any prospective purchaser.

**9 Hawdon Street BROADFORD, VIC**

**Wilson Partners**