



7 Lantern Court WALLAN, VIC

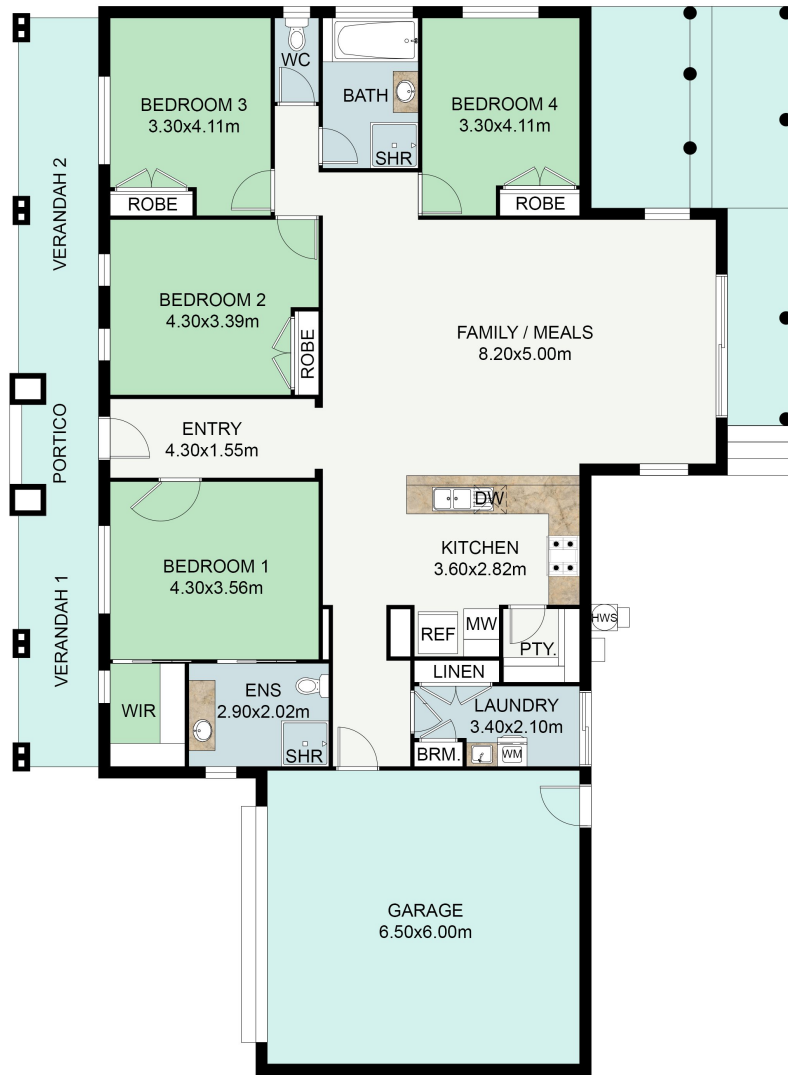


Primped, Primed & Yours To Love!

Immaculately presented family accommodation combined with a carefree lifestyle awaits you with this beautifully updated contemporary four-bedroom home situated in a quiet cul-de-sac of a highly sought neighbourhood.

Masterfully designed in a picturesque setting of landscaped gardens, this property introduces a welcoming home of proportion and style and delivers zoned family accommodations incorporating four spacious bedrooms, two bathrooms, a gourmet kitchen and a seamless connection to the outdoor entertaining deck and secure lawned rear garden.

The family accommodations offer four robed double bedrooms, with the master comprising a walk-in robe and full ensuite, whilst the family-sized bathroom features a separate shower, bath and WC. Other notable features include brand new carpets and interior paint, large I



FLOOR PLAN

This floor plan including furniture, fixture measurements and dimensions are approximate and for illustrative purposes only. BoxBrownie.com gives no guarantee, warranty or representation as to the accuracy and layout. All enquiries must be directed to the agent, vendor or party representing this floor plan.

7 Lantern Court, Wallan
7 Lantern Court

WALLAN, VIC