



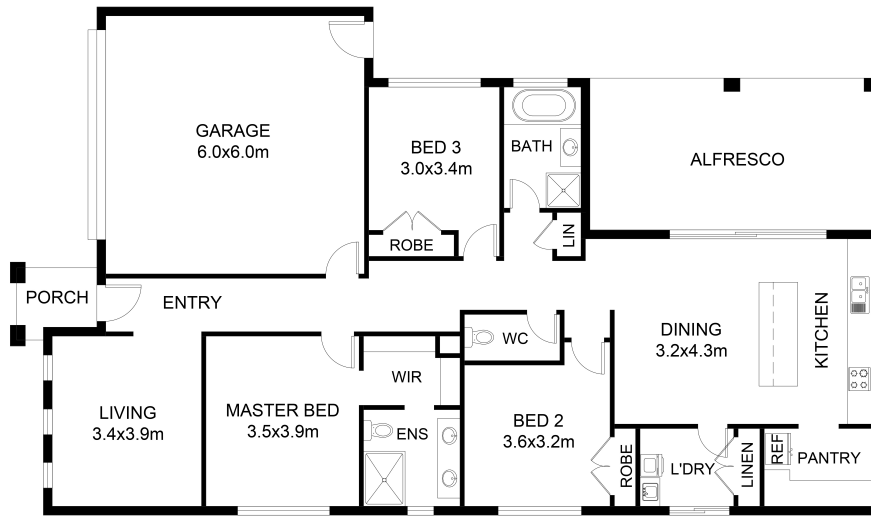
38 North Mountain Road HEATHCOTE
JUNCTION, VIC



Village Lifestyle Without Compromise

Nestled upon 2009m² (approx.) of beautifully presented gardens and privately set behind feature gates, this comfortable family residence is the culmination of a well-considered floorplan with preferred north/south orientation and spacious proportions, contemporary style and function.

A charming facade creates a welcoming street presence that continues through a floorplan that flows effortlessly throughout. The central hallway cleverly defines the accommodations and living zones, featuring three fully robed double bedrooms, a main with walk-in robe and full ensuite, and a central family bathroom with separate bath, frameless shower and WC. The open plan dining space is complemented by a gourmet kitchen comprising custom two-tone cabinetry, stone benchtops, family-sized breakfast bar, a suite of quality stainless steel appliances with an adjacent butler's pantry. The fully enclosed alfresco entertaining space transitions effortlessly through glass sliders, providing a lovely north-facing vantage point and year-round entertaining without compromise. Outdoors, the expansive garden space offers an opportunity for play and future plans that could include a kitchen garden,



FLOOR PLAN

This floor plan including furniture, fixture measurements and dimensions are approximate and for illustrative purposes only. BoxBrownie.com gives no guarantee, warranty or representation as to the accuracy and layout. All enquiries must be directed to the agent, vendor or party representing this floor plan.

28 North Mountain Road, Heathcote Junction