



32 Stafford Street BROADFORD, VIC



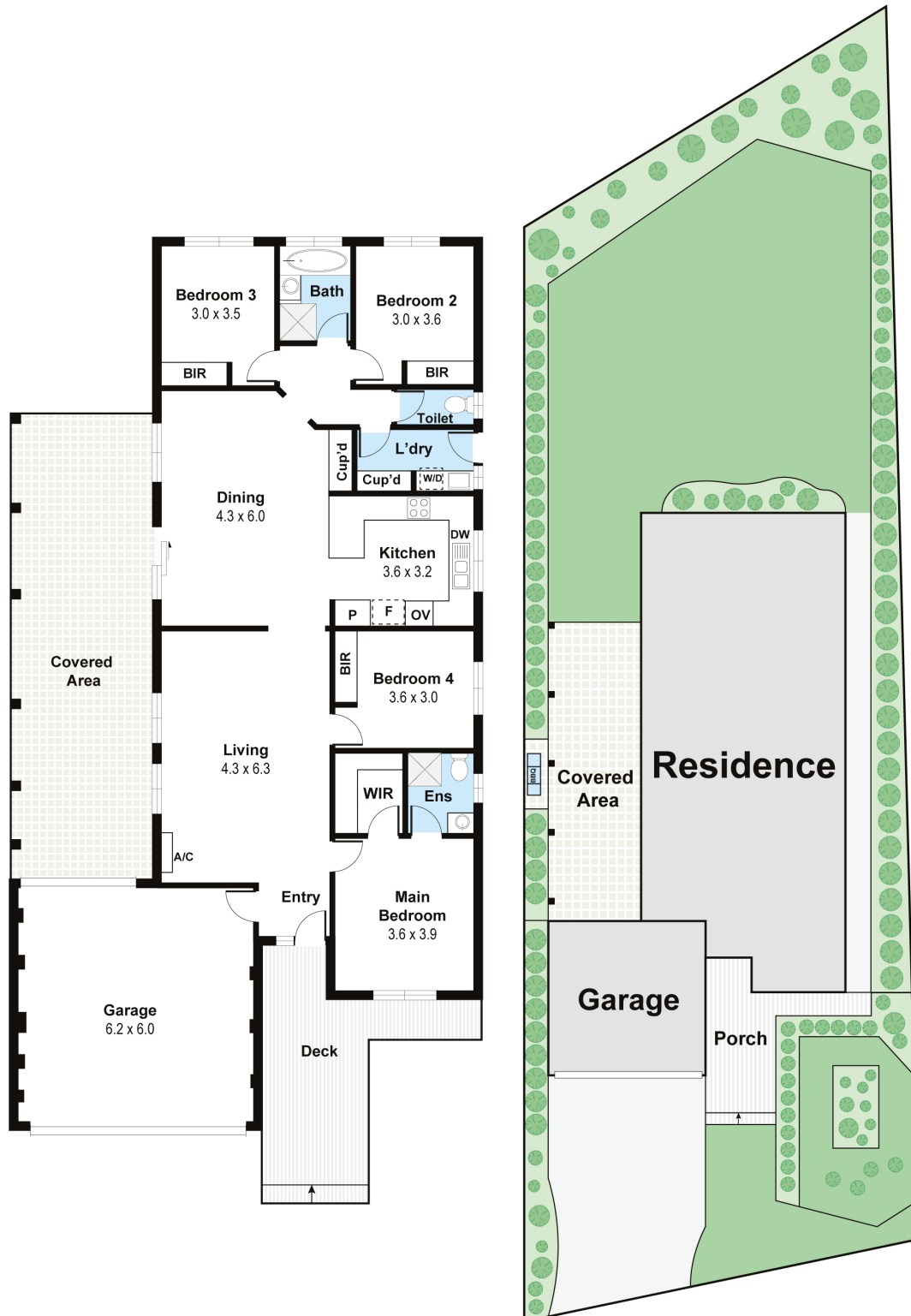
## Superb Family Living In Prime Township Locale

Positioned in a tightly held enclave within the Broadford Township, this single level home combines the invaluable advantages of an idyllic low-maintenance lifestyle with an exceptional opportunity to start out in style, downsize without compromise or invest with success in a superb location, central to everything.

Four spacious bedrooms come with built-in robes, with the main bedroom featuring a walk-in robe and full ensuite. Three further bedrooms are serviced by a central family bathroom comprising separate bath, shower and WC.

Centrally positioned and offering easy access to Broadford Primary and Secondary, High St shops and cafes and Broadford train station and within walking distance of the Donaldson D

Total Approx. Floor Area 186sqm  
 0 1 2 3 4 5  
 Floorplan Scale Bar (m)



32 Stafford Street, Broadford 3658

**Wilson Partners**

Whilst every attempt has been made to ensure the accuracy of the floor plan contained here, measurements are approximate and no responsibility is taken for any error, omission or misstatement. This plan is for illustrative purposes only and should be used as such by any prospective purchaser or tenant.

**32 Stafford Street**

**BROADFORD, VIC**