



2A Lisa Place WALLAN, VIC



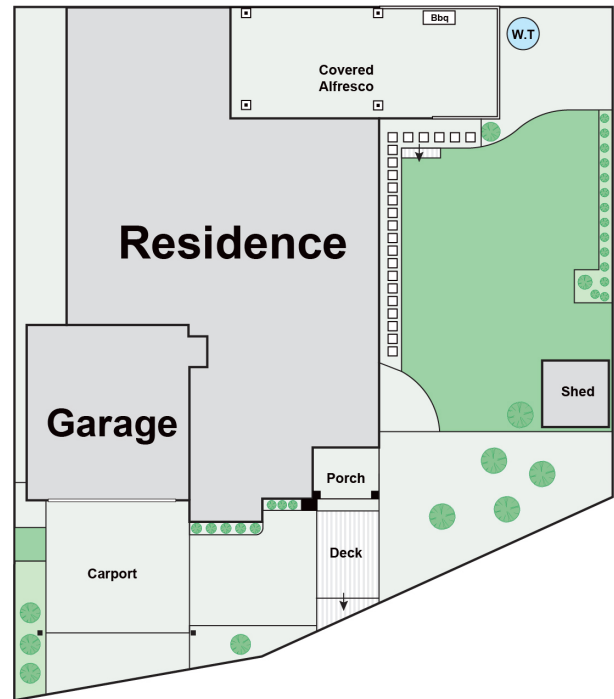
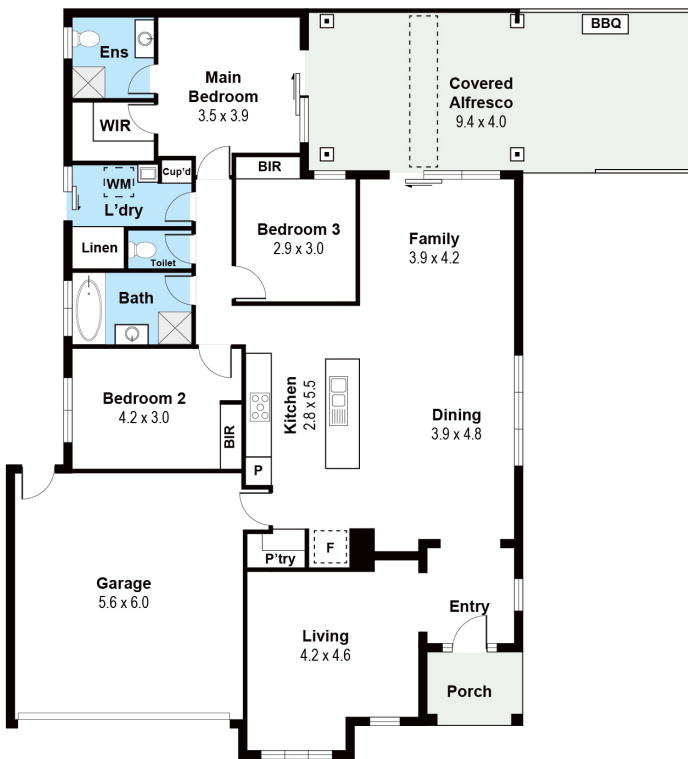
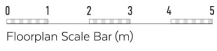
## Stylish And Serene Among The Parklands

Enviably situated with uninterrupted views of Lisa Place playground and surrounding nature reserve, this impressive Dennis Family built residence exudes impressive proportions and contemporary elegance on a low maintenance corner allotment with secure side access.

Masterfully designed and immaculately kept, the residence delivers zoned family accommodation with three bedrooms, two bathrooms, separate living area and an amazing connection to the outdoor alfresco space for year-round entertaining and living.

Contemporary interiors include timber laminate flooring, soaring ceilings and neutral tones that welcome you into the formal living space and complement the open plan family and meals area with a gourmet kitchen comprising bespoke cabinetry, stone benchtops, breakfast bar and quality stainless steel appliances. An effortless transition to the outdoors unfolds to the fully covered alfresco entertaining area and private garden, including grassed la

Total Approx. Floor Area 169sqm



2A Lisa Place, Wallan 3756

Whilst every attempt has been made to ensure the accuracy of the floor plan contained here, measurements are approximate and no responsibility is taken for any error, omission or misstatement. This plan is for information purposes only and should be used as such by any prospective purchaser or tenant.

**2A Lisa Place WALLAN, VIC**

**Wilson Partners**