

11 Angel Way BEVERIDGE, VIC

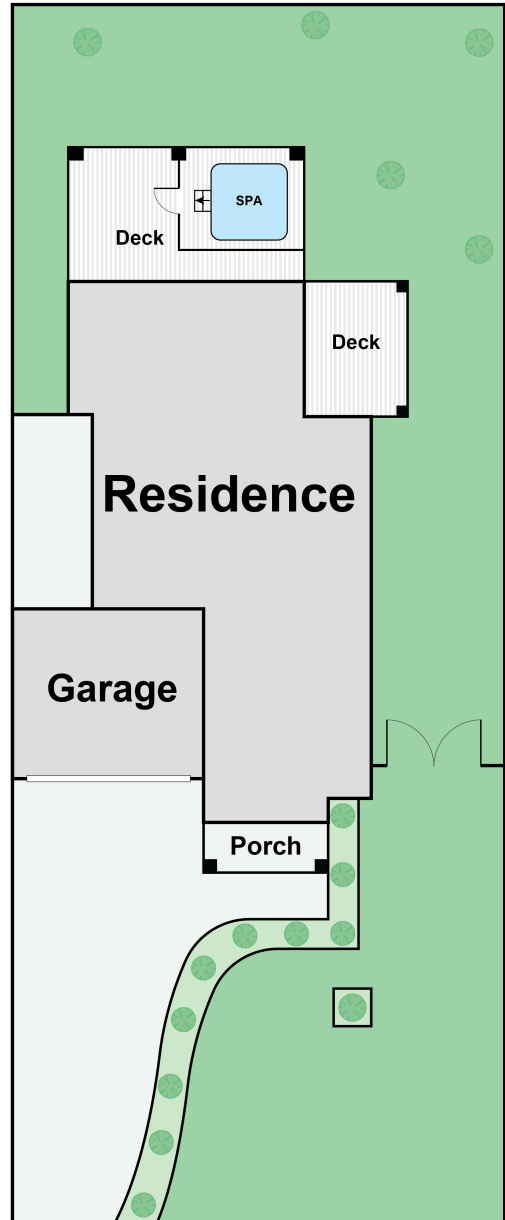
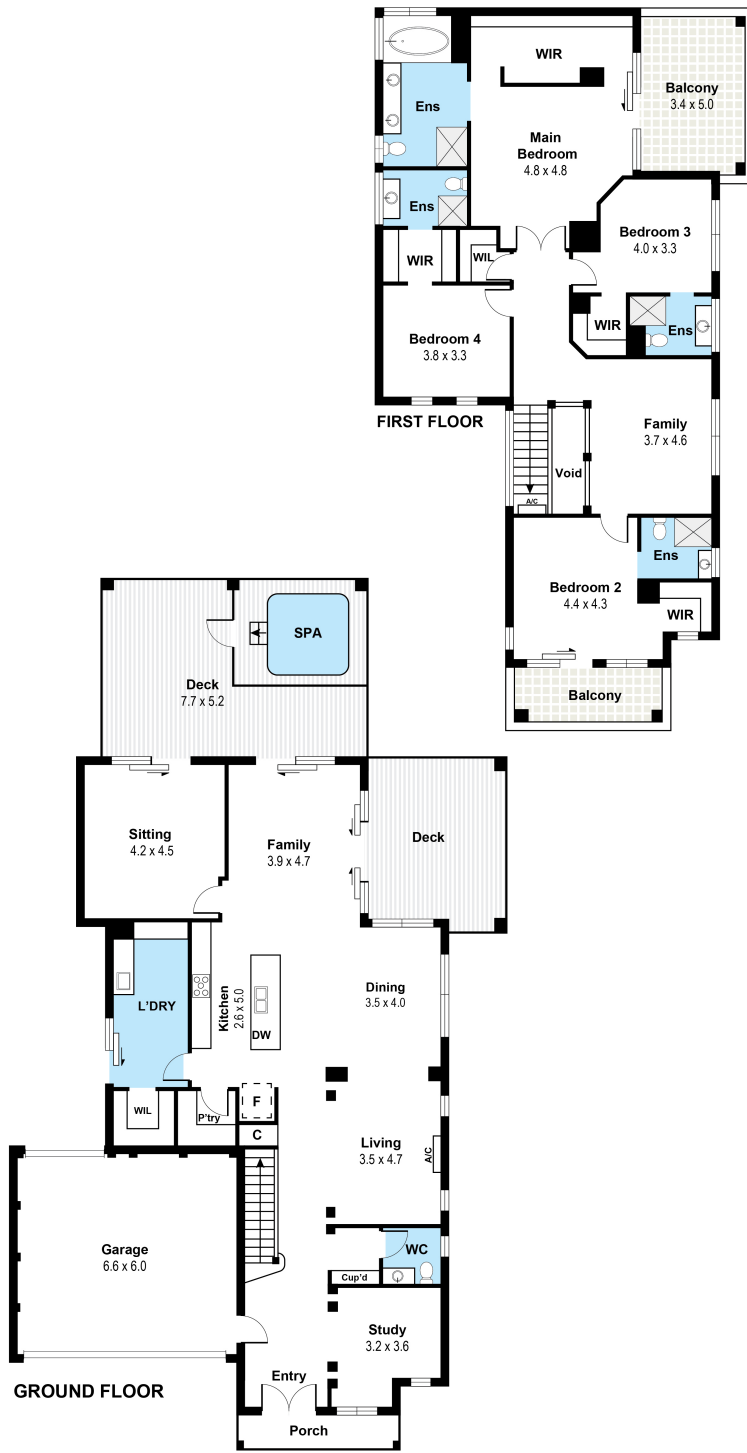
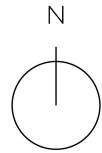
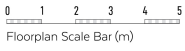


Deluxe designer family home in the coveted Mandalay Estate

Nestled quietly back from the street in the highly desirable Mandalay Estate, this deluxe designer home promises contemporary family living in a tranquil resort-style setting. Cleverly crafted to maximise quality and style, it boasts a sumptuous double storey layout and impressive alfresco entertaining with a sunny north aspect. Be quick to secure your place in a tightly held pocket of Melbourne's thriving northern growth corridor, with every essential at your fingertips.

The foyer flows into a superb lounge, light filled open plan living and dining area, and theatre room at the back. Sliding glass doors reveal a marvellous undercover Ekodeck with a hot tub ? ideal for year-round entertaining ? and private low maintenance backyard. Also downstairs is a stunning stone kitchen with premium Blanco fixtures (oven, gas cooktop, dishwasher), a walk-in pantry and breakfast bar, and a large study zone with a nearby powder

Total Approx. Floor Area 340 SQ.M



11 Angel Way, Beveridge 3753

Whilst every attempt has been made to ensure the accuracy of the floor plan contained here, measurements are approximate and no responsibility is taken for any error, omission or misstatement. This plan is for illustrative purposes only and should be used as such by any prospective purchaser.

11 Angel Way BEVERIDGE, VIC

Wilson Partners