



2 Marin Court BROADFORD, VIC



Opportunity Knocks

Privately nestled away on a large 846m² (approx) block, sits this charming cedar home that is bursting with potential.

The home provides lounge, kitchen/dining, 3 bedrooms, central bathroom with shower and bath, separate toilet and laundry. The kitchen is small but functional and there is ample space for renovation or extension. The dining area is conveniently located adjacent to the kitchen, making meal prep or entertaining easy. With more character than most modern homes, this property has the bones of a great first home or investment.

Additional features include gas wall heater, air conditioning unit, garden shed and single carport with an automatic roller door.

Bianca L Thomas

+61 425 733 651

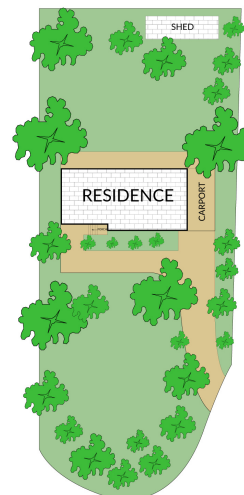
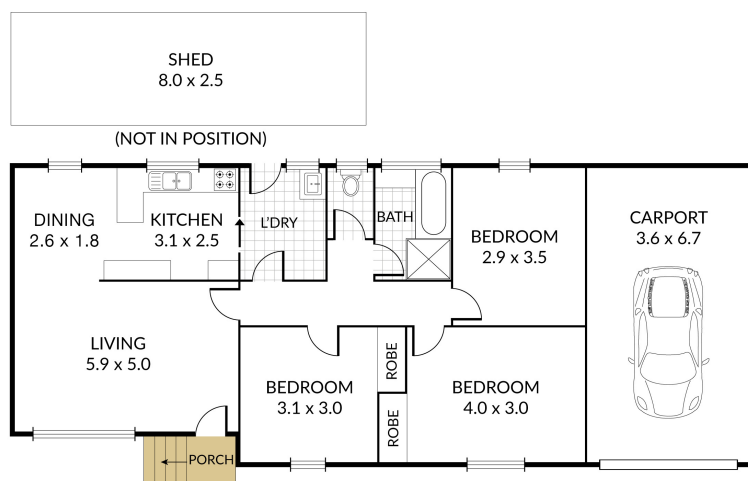
www.wilsonpartners.com.au

Internal 106m² External 742m² Total 848m²

2 Marin Court, **Broadford**



3 x 1 x 1 x



NOTE: Every precaution has been taken to verify the accuracy of the above details. However, prospective purchasers are advised to make their own enquiries.

2 Marin Court

BROADFORD, VIC