



7 Dudley Street WALLAN, VIC



Superb Location!

Situated moments away from all Wallan has to offer and set on approximately 597m². This modern and stylish home is perfect for first home buyers, investors or downsizers.

Ideally laid out, this home offers a generous sized master with spacious ensuite and a huge walk-in robe. There is room for the entire family with another three bedrooms serviced by a main bathroom with separate toilet. The heart of the home embraces an open concept kitchen/living/dining area with an abundance of natural light.

Additional features include ducted heating, split system and double garage.

Only a 3 minute drive to Wellington Square Shopping Centre and a short walk to Hadfield Pa



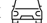
Bianca L Thomas

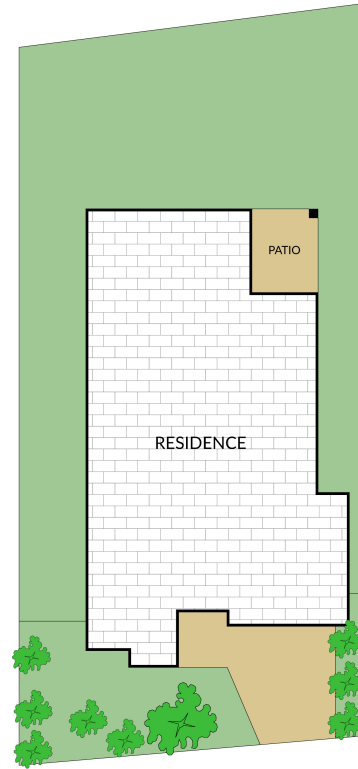
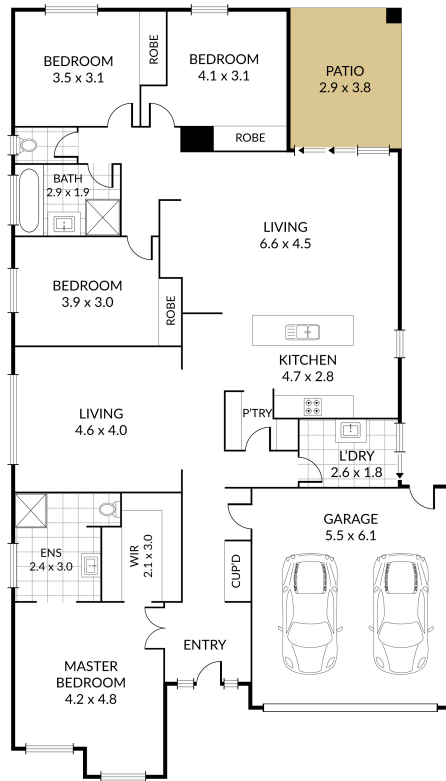
+61 425 733 651

www.wilsonpartners.com.au

Internal 210m² External 387m² Land Size 597m²

7 Dudley Street, Wallan 
NORTH

4 x  2 x  2 x 



NOTE: Every precaution has been taken to verify the accuracy of the above details. However, prospective purchasers are advised to make their own enquiries.

7 Dudley Street

WALLAN, VIC