



3/36 Victoria Street SEYMOUR, VIC

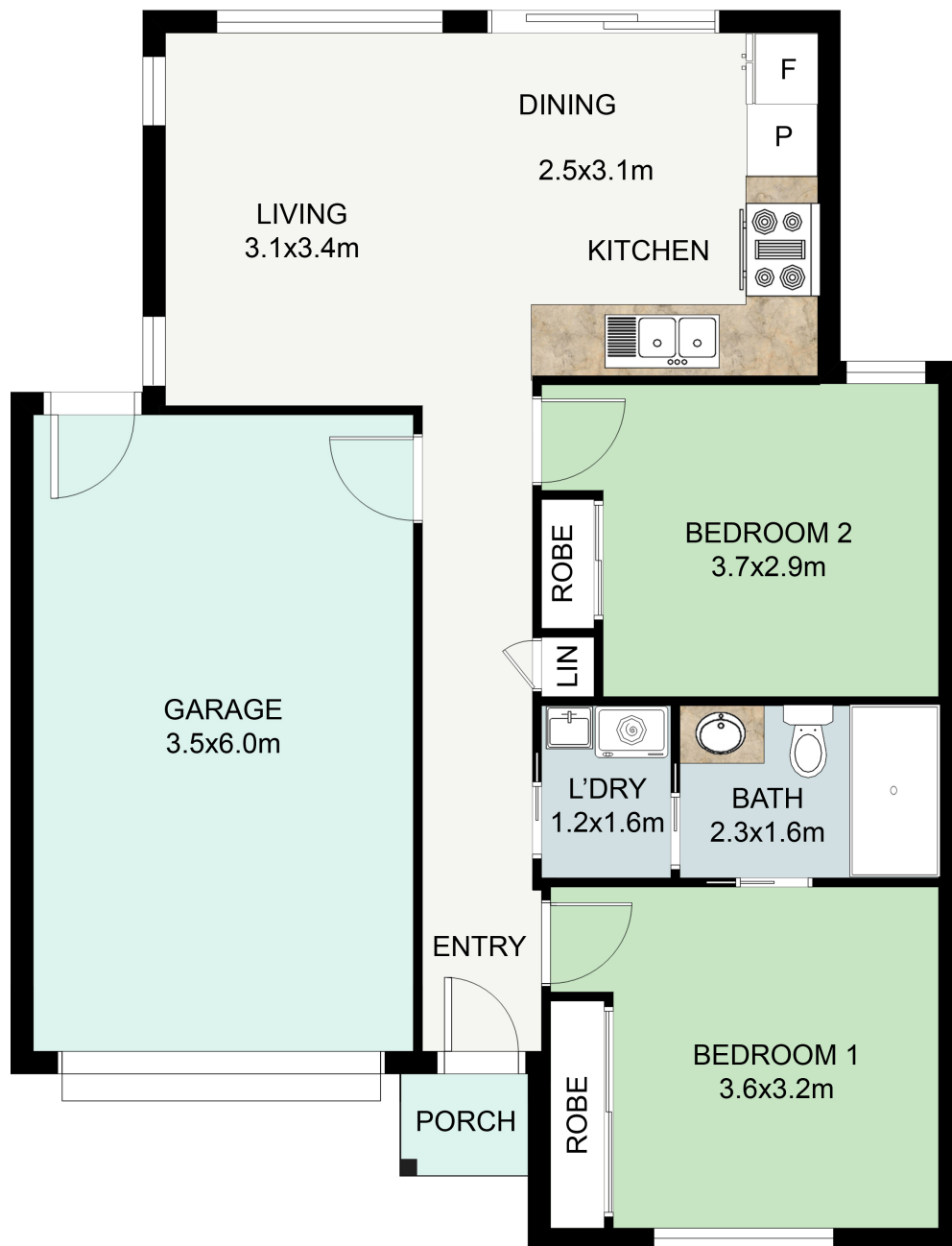


## Intimate modern villa gracing the property market in historic Seymour township

Finding quality properties within the current housing market is becoming increasingly difficult for aspiring home owners. We have on offer an exciting opportunity to break into home ownership against the stunning backdrop of Victoria's Seymour region.

Away from the hustle and bustle of Melbourne's city centre, these modern villas combine timeless style with contemporary fittings, making them a standout against the local competition.

But it's when you step outside the property that its true value comes to light. Nestled on the picturesque Goulburn River, Seymour is a historic railway township based in the Shire of Mitchell. The villas' premier location amongst the scenic countryside, surrounded by b



## FLOOR PLAN

This floor plan including furniture, fixture measurements and dimensions are approximate and for illustrative purposes only.  
 BoxBrownie.com gives no guarantee, warranty or representation as to the accuracy and layout.  
 All enquiries must be directed to the agent, vendor or party representing this floor plan.

GROUND FLOOR : 63.09m<sup>2</sup>  
 GARAGE : 22.96m<sup>2</sup>  
 PORCH : 1.0m<sup>2</sup>  
 TOTAL : 87.05m<sup>2</sup>

3/36 Victoria Street, Seymour  
 3/36 Victoria Street SEYMOUR, VIC