



7 Melrose Drive KILMORE, VIC



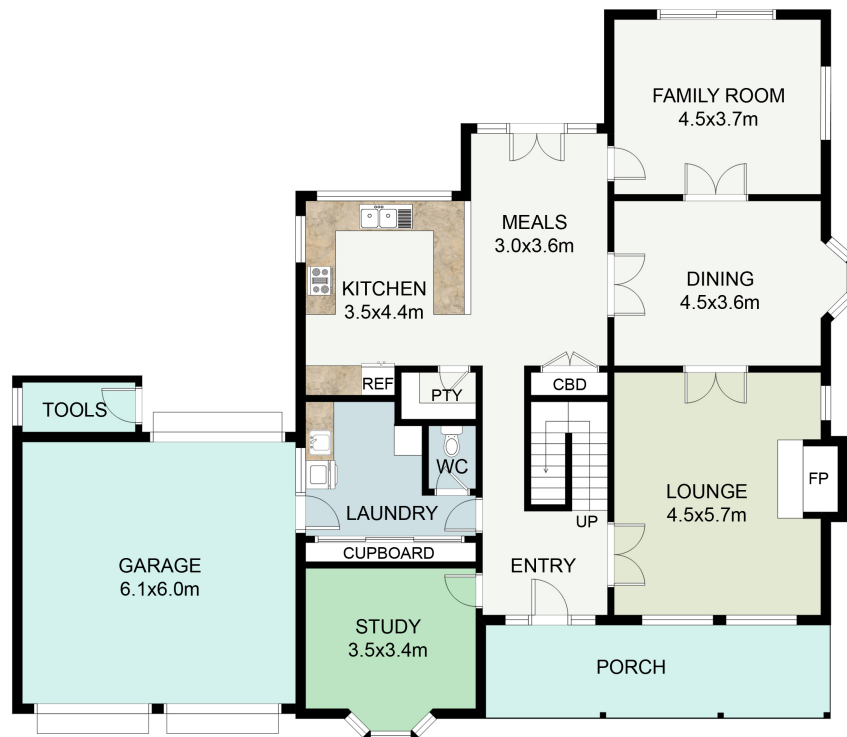
Superb family acreage in a sought-after Kilmore pocket

Tucked away in a leafy Kilmore pocket upon 4,366sqm, this superb family residence captures the essence of relaxed country living in a neighbourly community. Immaculately presented with scope to personalise if you desire, it boasts comfortable light filled interiors with generous accommodation and lush expansive gardens with alfresco entertaining. Abundantly peaceful and private, this unique property is suited to first home buyers or upsizers looking for their forever home.

Nestled at the end of a long driveway, the brick facade reveals a spacious lounge with a wood burning fireplace, elegant dining area with bay windows, and sun filled family zone at the back ? all with a gorgeous green outlook. Nearby is a huge timber kitchen with stainless steel appliances (gas cooking and dishwasher), a breakfast bar, ample cabinetry and an adjacent meals area. Outdoors is a large covered patio that is ideal for entertaining or



UPPER FLOOR PLAN



GROUND FLOOR PLAN

This floor plan including furniture, fixture measurements and dimensions are approximate and for illustrative purposes only. BoxBrownie.com gives no guarantee, warranty or representation as to the accuracy and layout. All enquiries must be directed to the agent, vendor or party representing this floor plan.

7 Melrose Drive, Kilmore
7 Melrose Drive KILMORE, VIC