



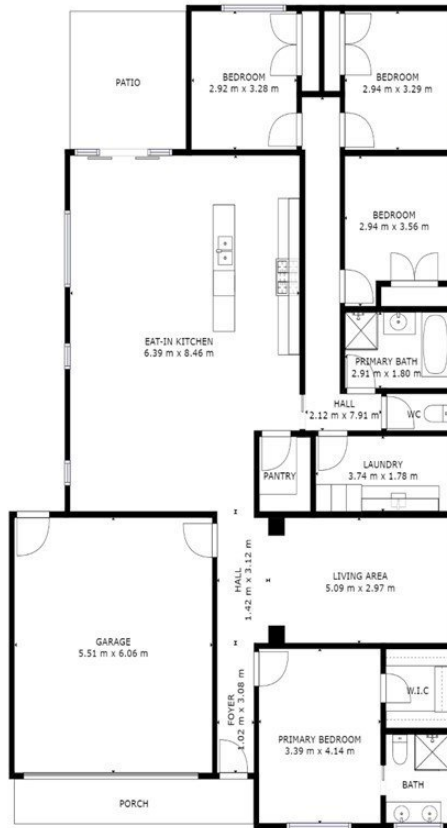
24 Periwinkle Crescent WALLAN, VIC



Impressive architect-designed family home in a blue ribbon locale

It is placed in a quiet family-friendly street at Wallan's popular northern tip, footsteps to Springridge Dog Park and just a stone's throw to Wellington Square Shopping Centre, town centre cafes, medical facilities and sports clubs, plus Wallan Primary School, Wallan Secondary College and great childcare options. Melbourne commuters will enjoy convenient CBD access in less than one hour via the freeway or V/Line train.

Hardwood floors flow from the entrance hall into a large living area and huge open plan family and dining zone, drenched in natural light at the back. A stunning stone kitchen boasts stainless steel gas appliances, a walk-in pantry and an island bench with a breakfast bar. Step outside to a private covered entertaining patio and easycare child-friendly backyard with a glorious north aspect. Accommodation incorporates a plush master bedroom with a walk-in robe and sleek twin ensuite, three bedrooms with built-ins and a gorgeous family



GROSS INTERNAL AREA
 FLOOR 1: 161 m², EXCLUDED AREAS:
 GARAGE: 33 m²
 TOTAL: 161 m²
SIZES AND DIMENSIONS ARE APPROXIMATE, ACTUAL MAY VARY.

FLOOR 1



24 Periwinkle Crescent

WALLAN, VIC