



7 PARK VIEW DRIVE KILMORE, VIC



PEACE ON PARK VIEW

Located on approximately 363m² overlooking the peaceful park view in one of Kilmore's up and coming new areas this stylish and well laid out four bedroom home has so much to offer! At approximately 4 years young, this property is perfect for a first home buyer, investor or downsizer.

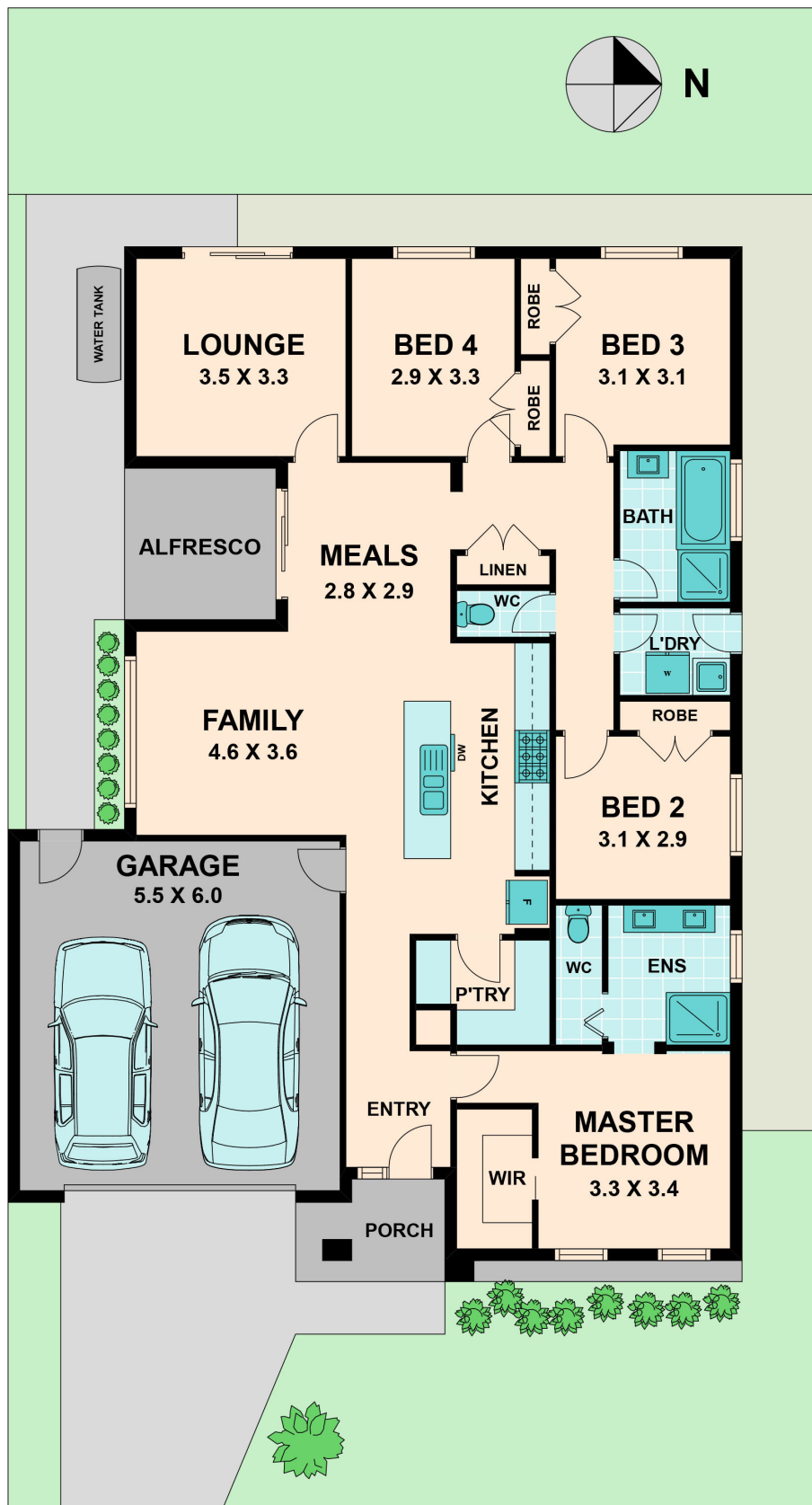
The home itself offers four well sized bedrooms, the master complete with walk in robe and ensuite. Your stylish open planned kitchen/living/dining area includes a well sized walk in pantry and stone benchtops. An additional theatre room at the rear of the property ensures there is ample room for the whole family.

Additional features include double garage, ducted heating, evaporative cooling and an undercover alfresco area.

Bianca L Thomas

+61 425 733 651

www.wilsonpartners.com.au



7 PARK VIEW DRIVE

KILMORE, VIC