



36 Westwood Road KILMORE, VIC

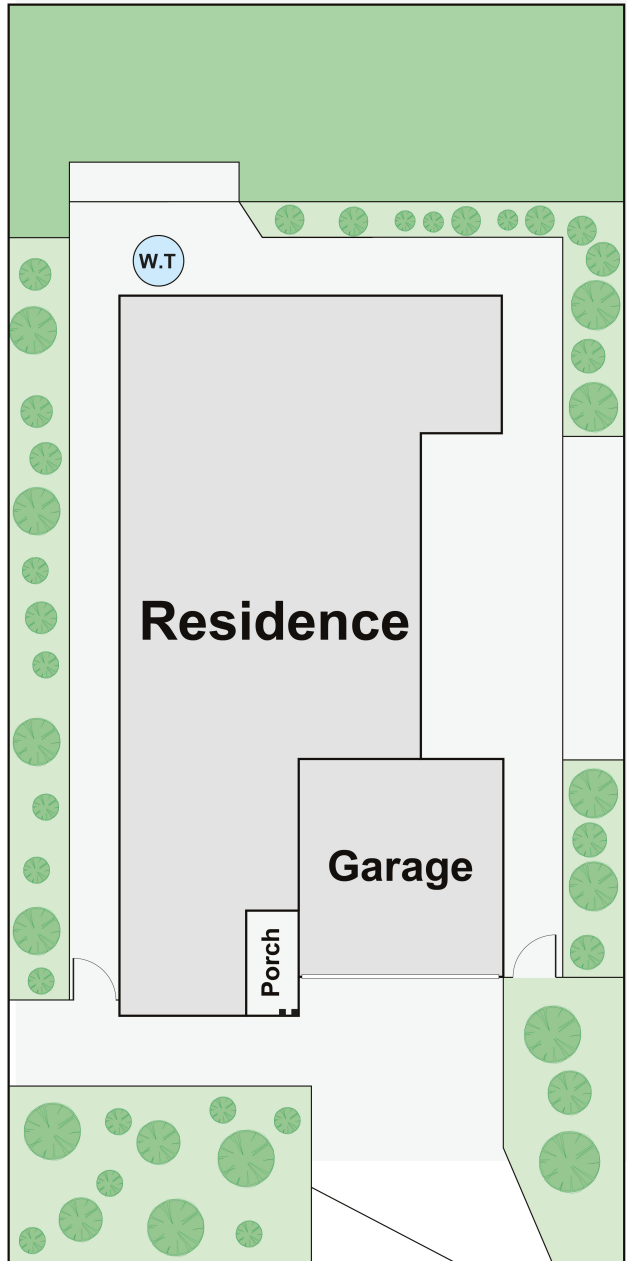
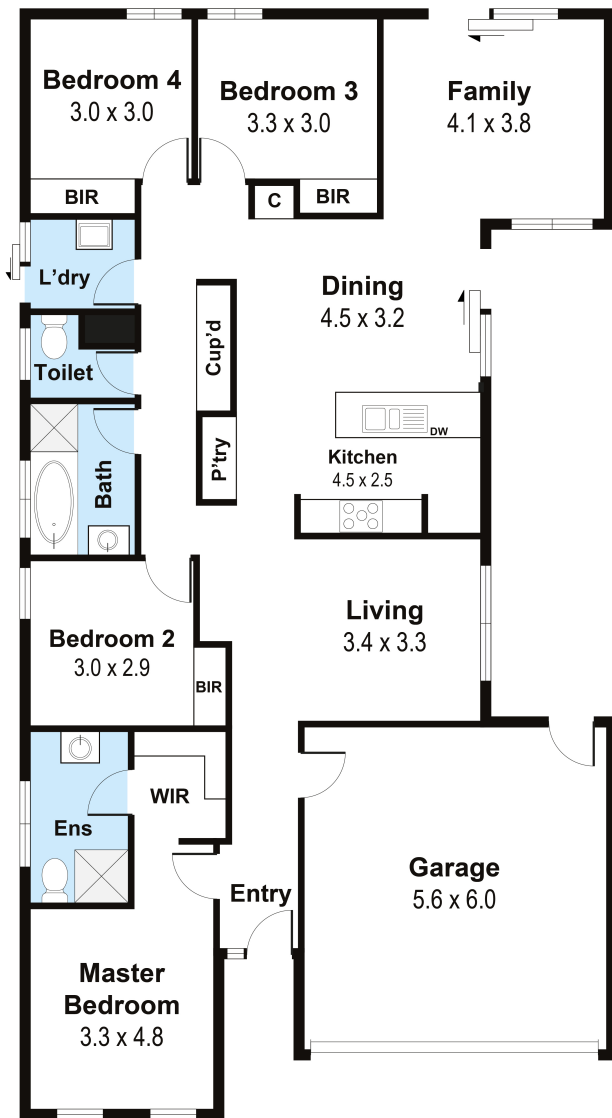


Stunning modern family home in a highly sought-after Kilmore pocket

Occupying 480sqm in a neighbourly Kilmore street, this stunning modern family home promises an effortless designer lifestyle in a quiet country locale. Elegantly appointed with high-end fixtures and finishes, it boasts a light filled open plan design with multiple living spaces and private alfresco entertaining that is perfect for kids or to relax. Be quick to secure a proven investment or fantastic abode for those with a growing brood.

Beyond neat landscaped gardens is a large lounge and spacious living and dining area. Sliding glass doors provide a seamless flow to a marvellous sun soaked entertaining patio and lush level backyard. At the heart of the home is a stylish stone kitchen with premium stainless steel gas appliances and a breakfast bar. Further on are four good sized bedrooms including the master with a sleek ensuite, and a sparkling family bathroom that has a bath and shower. It features a separate laundry, ducted air conditioning, extensive storage, a w

Total Approx. Floor Area 179sqm
 0 1 2 3 4 5
 Floorplan Scale Bar (m)



36 Westwood Road, Kilmore 3764

Whilst every attempt has been made to ensure the accuracy of the floor plan contained here, measurements are approximate and no responsibility is taken for any error, omission or misstatement. This plan is for illustrative purposes only and should be used as a guide only. For more information, please contact your real estate agent or tenant.

36 Westwood Road

KILMORE, VIC

Wilson Partners