



9 PINWOOD PLACE KILMORE, VIC



Perfection On Pinewood

Situated on approximately 605m² and hidden away in one of Kilmore's quiet locations this beautiful four bedroom home is perfectly laid out to suit your family needs.

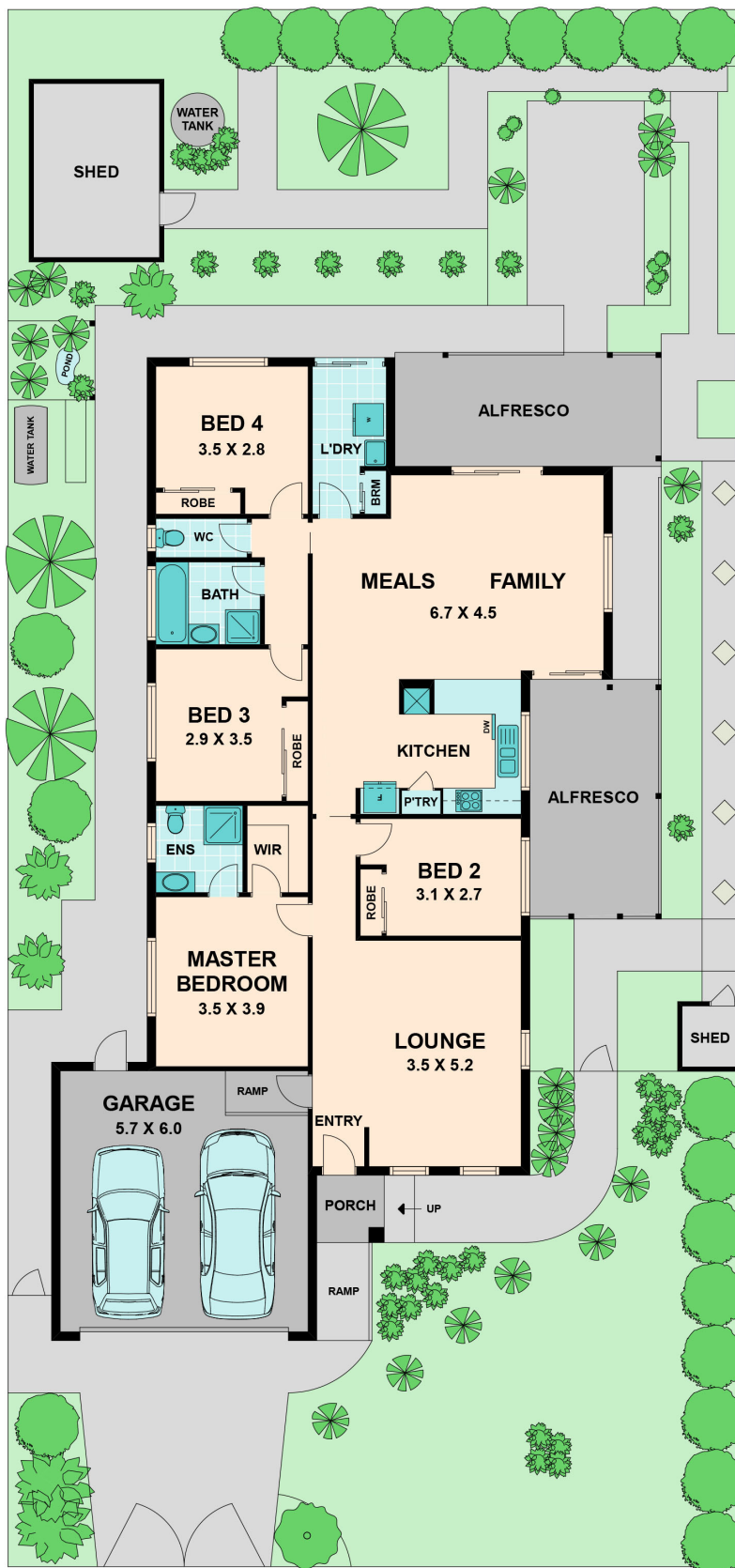
Offering four well sized bedrooms, the main bedroom completed with en-suite and walk in robe. A generous open plan kitchen/dining/family area and an additional separate lounge room at the front of the house.

The exterior of the property provides two undercover entertaining areas and garden sheds.

Bianca L Thomas

+61 425 733 651

www.wilsonpartners.com.au



9 PINWOOD PLACE

KILMORE, VIC