



11/4 Sundew Avenue WALLAN, VIC

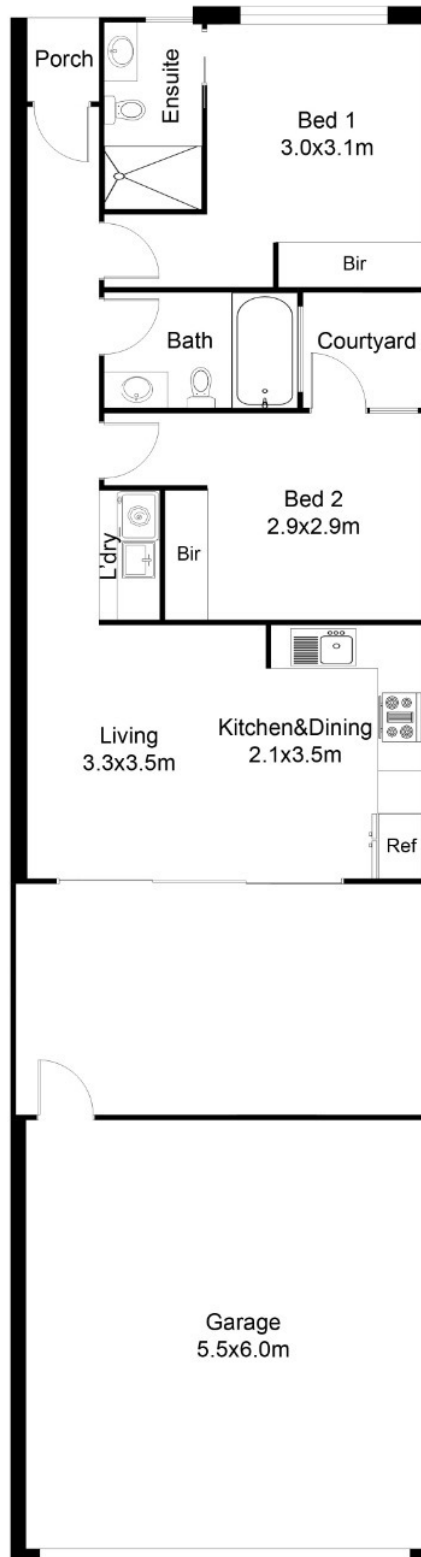


House and Land Package

Quality turnkey house and land package from New Home Shop, with an expected completion date of December 2021. Nestled on approximately 145sqm in a new pocket of Wallan's prestigious Featherton Rise Estate. Additionally, it qualifies for the Victorian Government's \$20K regional First Home Owner Grant (FHOG) and \$25K HomeBuilder Grant for approved buyers.

The home will incorporate a spacious living and dining area flowing to an entertaining patio and landscaped gardens, stunning gas kitchen, large master bedroom with built-ins and an ensuite, generous second bedroom with built-ins and a private courtyard and sleek bathroom with shower over a bath. It will feature a European laundry, gas ducted heating, split system air conditioning, solar hot water, LED downlights throughout and a remote control double garage.

Surrounded by green open spaces, this marvellous residential offering presents a perfect opportunity for young families, downsizers or investors to capitalise on the desirable location. Situated within easy reach of Wallan town centre including three supermarkets and a choice of cafes, medical facilities, childcare options, Wallan Secondary College and Wallan Primary School, plus parks, playgrounds and recreation facilities. It is also close to trains and the Hume Freeway to head north or south to the CBD.



FLOOR PLAN

This floor plan including furniture, fixture measurements and dimensions are approximate and for illustrative purposes only.
 Boxbrownie.com gives no guarantee, warranty or representation as to the accuracy and layout.
 All enquiries must be directed to the agent, vendor or party representing this floor plan.

11/4 Sundew Avenue

WALLAN, VIC