

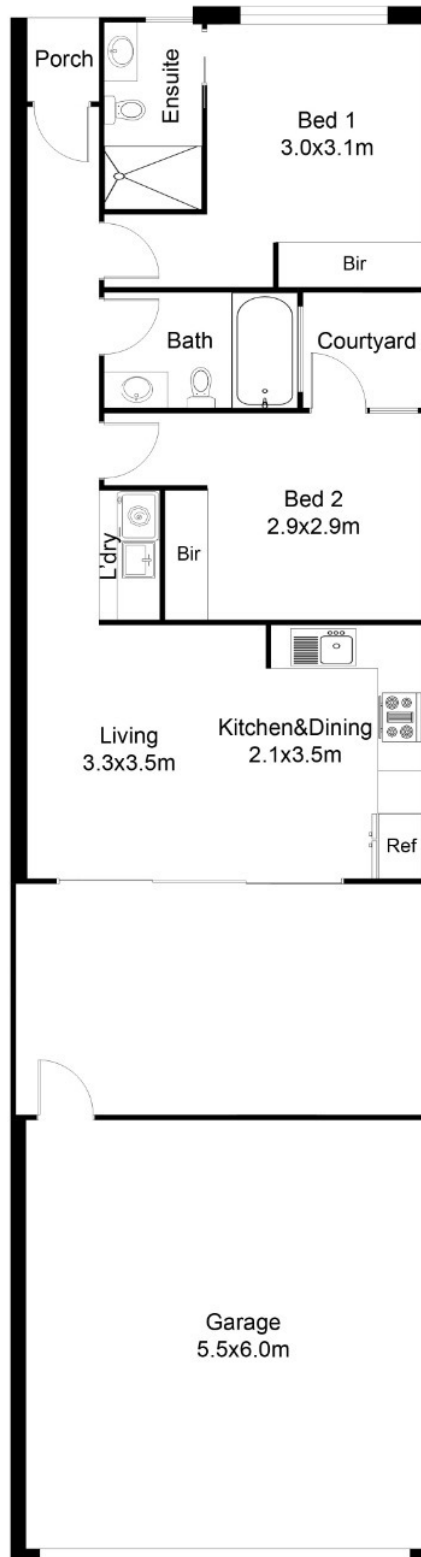
Lot 9/4 Sundew Avenue WALLAN, VIC



## Smart turnkey house and land package in Wallan's Featherton Rise Estate

Be quick to secure this quality turnkey house and land package from New Home Shop, with an expected completion date of December 2021, and establish your dream lifestyle on the cusp of the country. One of 11 homes located between Sundew Avenue and Rosella Way, it is nestled on approximately 137.5sqm in a new pocket of Wallan's prestigious Featherton Rise Estate. Additionally, it qualifies for the Victorian Government's \$20K regional First Home Owner Grant (FHOG) and \$25K HomeBuilder Grant for approved buyers.

Set opposite parklands and enjoying a glorious north-to-rear aspect, it will incorporate a spacious living and dining area flowing to a sun soaked entertaining patio and landscaped gardens, stunning gas kitchen, large master bedroom with built-ins and an ensuite, generous second bedroom with built-ins and a private courtyard, and sleek bathroom that has a shower over a bath. It will feature a European laundry, gas ducted heating, split system air



## FLOOR PLAN

This floor plan including furniture, fixture measurements and dimensions are approximate and for illustrative purposes only.  
 Boxbrownie.com gives no guarantee, warranty or representation as to the accuracy and layout.  
 All enquiries must be directed to the agent, vendor or party representing this floor plan.

**Lot 9/4 Sundew Avenue**

**WALLAN, VIC**