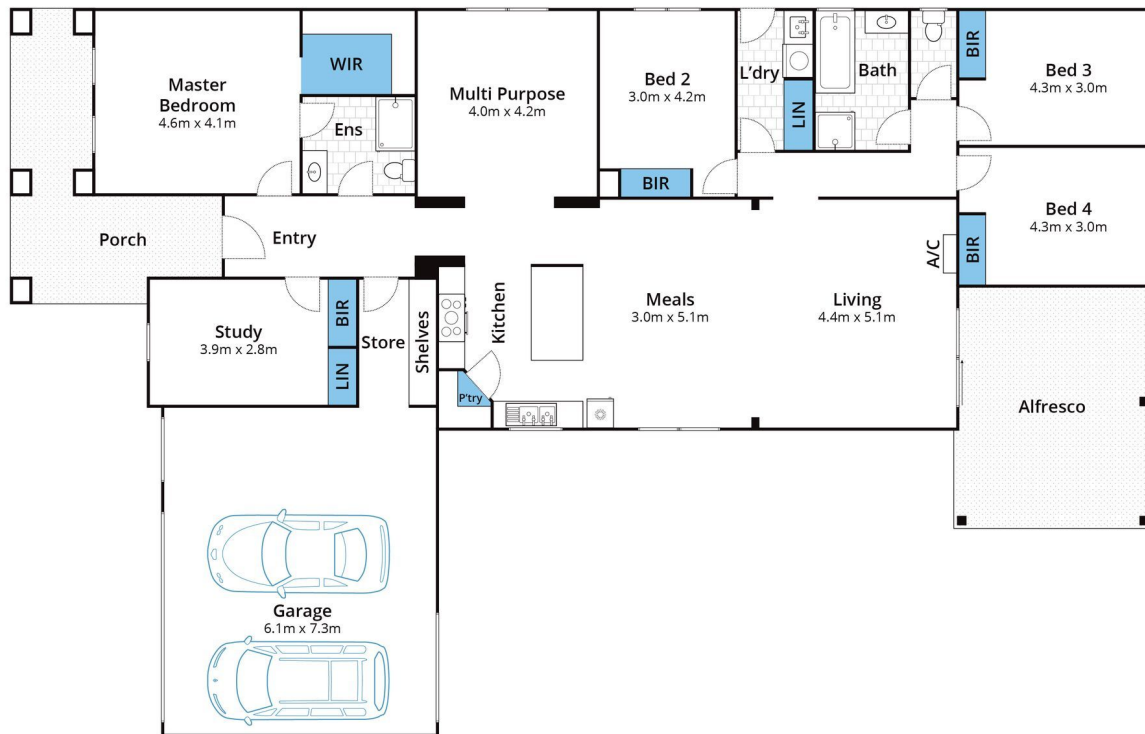




5 Rosie Drive BROADFORD, VIC



Modern family home in a popular Broadford pocket



Approx. Area 257m²
 Whilst bwr.com.au has made every attempt to ensure the accuracy of the floor plan contained here, measurements are approximate and no responsibility is taken for any error, omission, or mis-statement. This plan is for illustrative purposes only.

5 Rosie Drive, Broadford

5 Rosie Drive

BROADFORD, VIC