



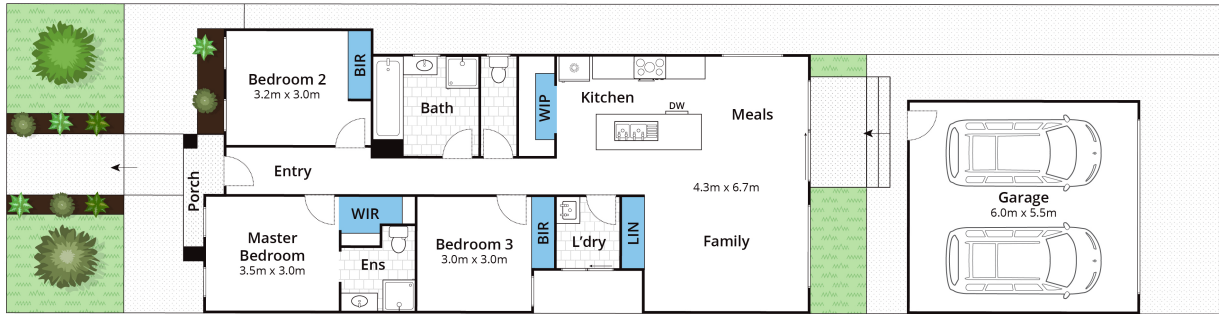
3 Astelia Lane WALLAN, VIC



Stunning new designer home in the sought-after Springridge Estate

Embracing modern style and effortless functionality, this brand new designer home enjoys a private parkside position upon 257sqm in the highly sought-after Springridge Estate. Set in a quiet friendly neighbourhood, it is ready for you to establish a dream family lifestyle. This smart property presents a fantastic opportunity to secure the Victorian Government's \$20K regional First Home Owner Grant (FHOG) or capitalise on great rental returns in the thriving Wallan community.

Framed by freshly landscaped gardens, the well defined floorplan boasts a spacious living and dining area, deluxe stone kitchen with a breakfast bar and walk-in pantry, plus low maintenance outdoor entertaining. Accommodation includes a superb master bedroom with a walk-in robe and sleek stone ensuite, two large bedrooms with built-ins and sparkling stone bathroom with a bath, shower and separate w/c. It features a good sized laundry, great stora



Approx House Area 105m²
Approx Land Area 257m²

Whilst bwrn.com.au has made every attempt to ensure the accuracy of the floor plan contained here, measurements are approximate and no responsibility is taken for any error, omission, or mis-statement. This plan is for illustrative purposes only.

3 Astelia Lane, Wallan

3 Astelia Lane

WALLAN, VIC