

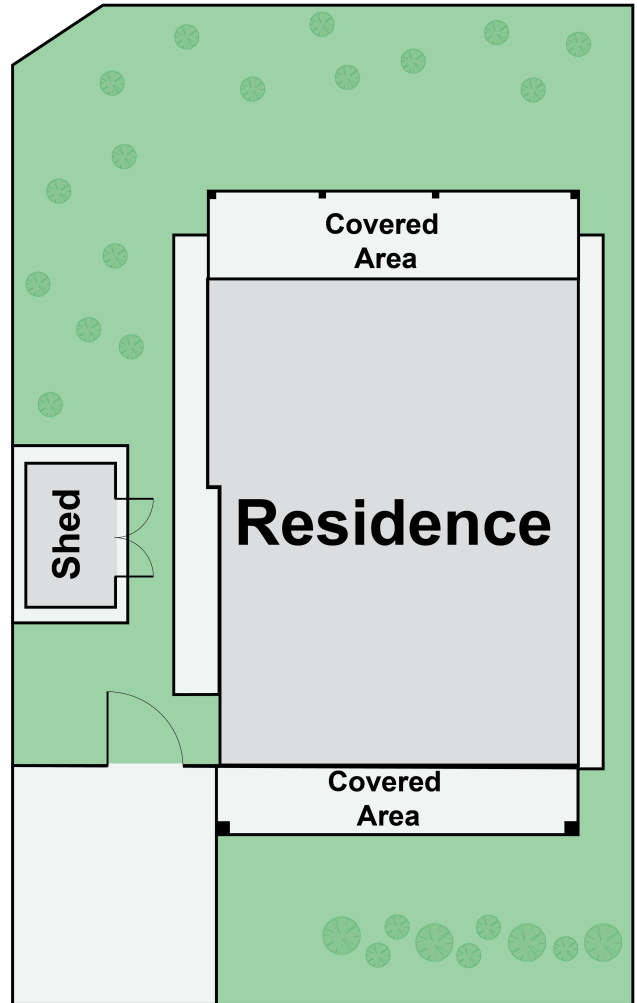
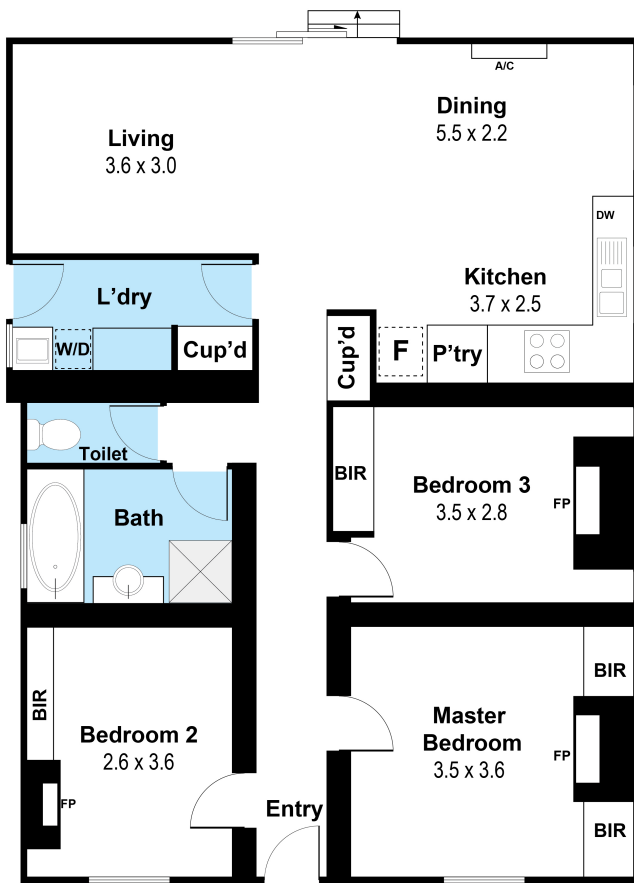
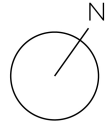


29 Gavan Street BROADFORD, VIC



Superb 1900s family home in the heart of Broadford

Total Approx. Floor Area 106 sqm



29 Gavan Street, Broadford 3658

Whilst every attempt has been made to ensure the accuracy of the floor plan contained here, measurements are approximate and no responsibility is taken for any error, omission or misstatement. This plan is for illustrative purposes only and should be used as a guide only. It is not to be used as a contract or as a basis for any legal proceedings.

29 Gavan Street

BROADFORD, VIC

Wilson Partners