



3305 Maroondah Highway ALEXANDRA, VIC



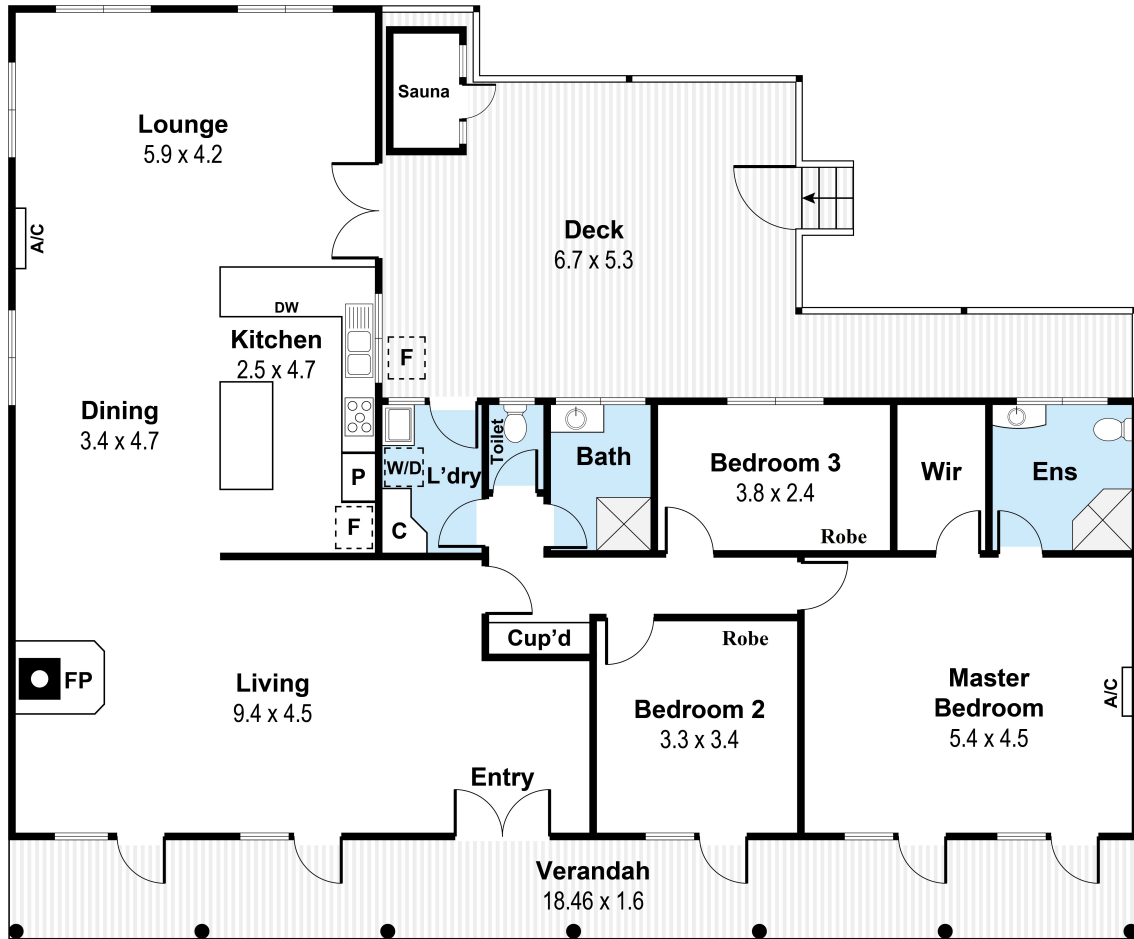
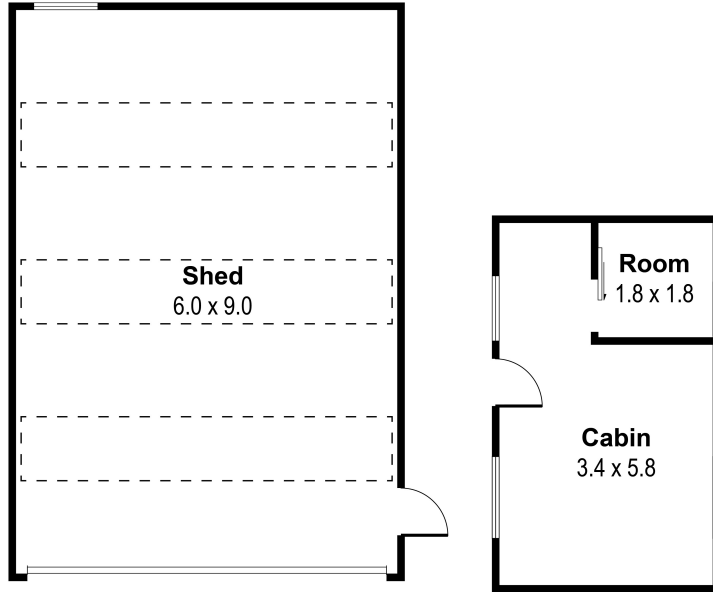
Stunning family sanctuary with an award-winning woodland garden

The crowning glory is a majestic woodland garden. Enjoyed from every room, it has been repeatedly featured in the Open Garden Scheme and the Alexandra & District Open Gardens. Professionally landscaped, it has a beautiful stream and Japanese fountain.

Set peacefully back from the street with a gracious facade and full width verandah, the home offers a spacious living room with a wood burning fireplace, large open plan lounge and dining area, and smart modern kitchen with stainless steel gas appliances and a breakfast bar. Further on are three generous bedrooms including the master with a walk-in robe, bright ensuite and verandah access, and an immaculate bathroom with a separate w/c. Step outdoors to a superb covered entertaining deck overlooking the glorious setting, Balinese-style gazebo, woodfired pizza oven, veggie garden and child-friendly grassed areas. A well appointed one-bedroom cabin completes this exceptional property. It features a sizeable laund

www.wilsonpartners.com.au

Total Approx. Floor Area 168 sq.m



3305 Maroondah Highway, Taggerty 3714

Whilst every attempt has been made to ensure the accuracy of the floor plan contained here, measurements are approximate and no responsibility is taken for any error, omission or misstatement. This plan is for illustrative purposes only and should be used as a guide only.

3305 Maroondah Highway
ALEXANDRA, VIC

Wilson Partners