



185 Camerons Lane BEVERIDGE, VIC



## Unique acreage opportunity in a sought-after Beveridge location

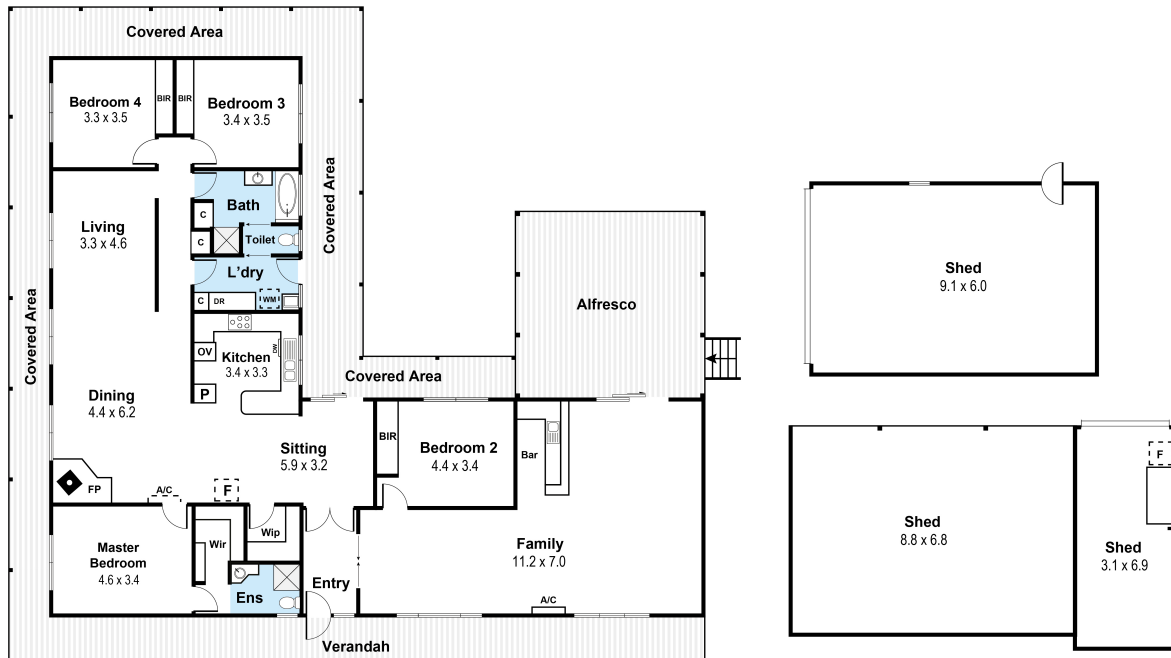
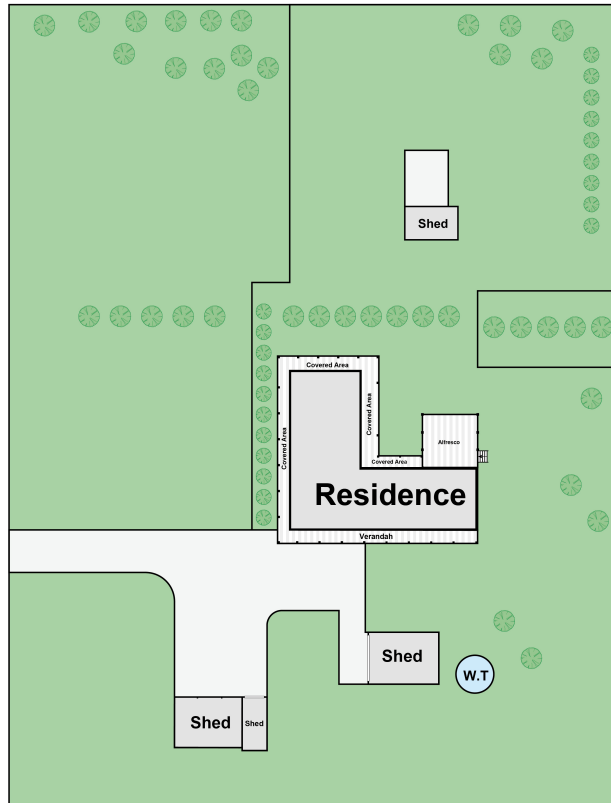
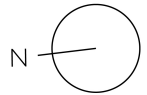
A unique opportunity has arisen to secure a fantastic acreage occupying approximately 8,700sqm in the neighbourly Beveridge community. Boasting a street frontage of 109m, the huge flat block offers a comfortable family home, which is currently tenanted, and immense future development potential with several adjoining major developments including Mandalay Estate. Set in Melbourne's popular northern growth corridor, it presents a classic country lifestyle with the added bonus of easy CBD access.

Nestled at the end of a long driveway, the weatherboard facade has a magnificent wraparound verandah that reveals a wide foyer, bright sitting area and spacious open plan living and dining room with a slow combustion fireplace, designed to capture the north aspect. In addition, the well defined floorplan has an enormous family room with a bar that leads to a

Total Approx. Floor Area 234sqm

0 1 2 3 4 5

Floorplan Scale Bar (m)



185 Camerons Lane, Beveridge 3753

Whilst every attempt has been made to ensure the accuracy of the floor plan contained here, measurements are approximate and no responsibility is taken for any error, omission or misstatement. This plan is for illustrative purposes only and should be used as a guide only. Not to be used as a contract document.

185 Camerons Lane

BEVERIDGE, VIC

Wilson Partners