

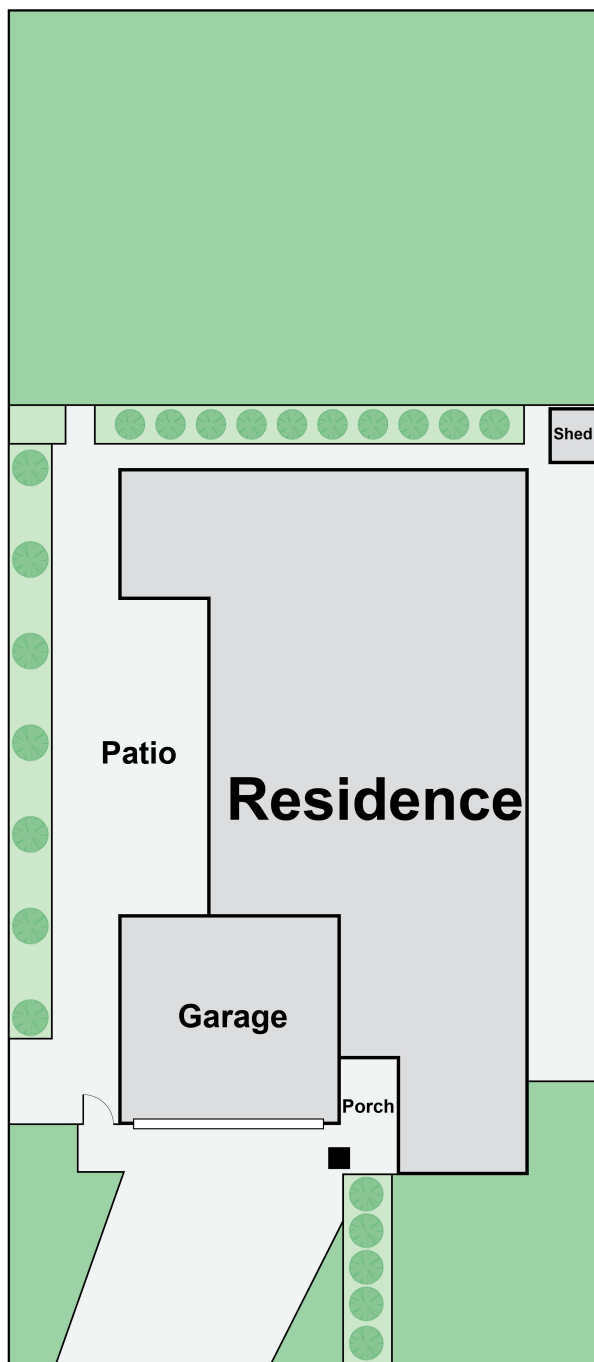
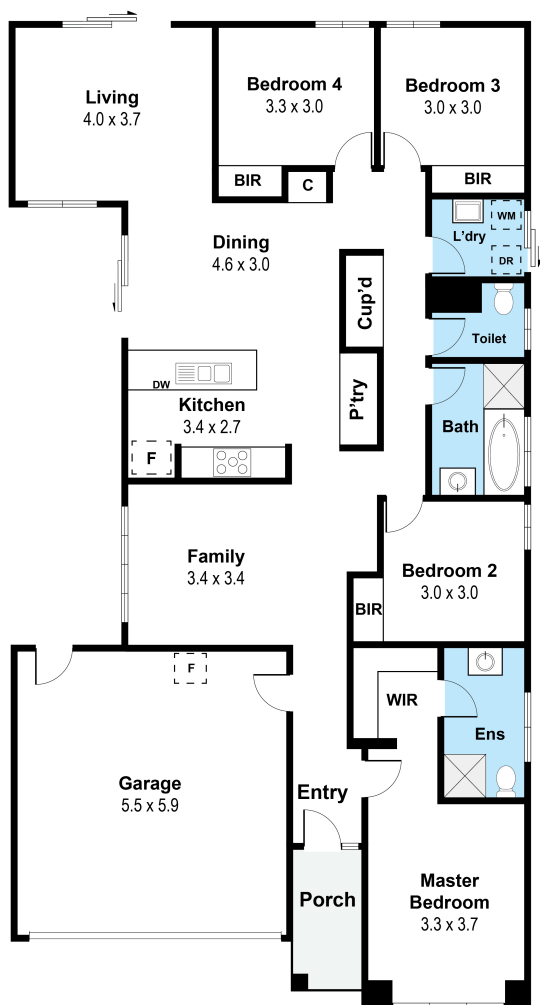
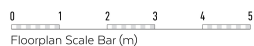


11 Coolabah Street BROADFORD, VIC



Superb designer family home in the popular Gumtree Estate

Total Approx. Floor Area 184sqm



11 Coolabah Street, Broadford 3658

Whilst every attempt has been made to ensure the accuracy of the floor plan contained here, measurements are approximate and no responsibility is taken for any error, omission or misstatement. This plan is for illustrative purposes only and should be used as a guide only. It is not to be used as a basis for any contract or agreement between a landlord and a tenant.

11 Coolabah Street

BROADFORD, VIC

**Wilson Partners**