



26 CHRYSTOBEL WAY KILMORE, VIC



Your Piece of Paradise

Wilson Partners is proud to present 26 Chrystobel Way, Kilmore!

This welcoming and well-presented three bedroom home is situated on a corner block of approximately 361m² and is located in one of Kilmore's prime family locations.

Your generously sized master bedroom, with walk-in-robe and ensuite is complemented with a beautiful bay window overlooking your perfectly manicured front garden. The remaining two bedrooms are separated by the large lounge which flows into your kitchen and dining area.

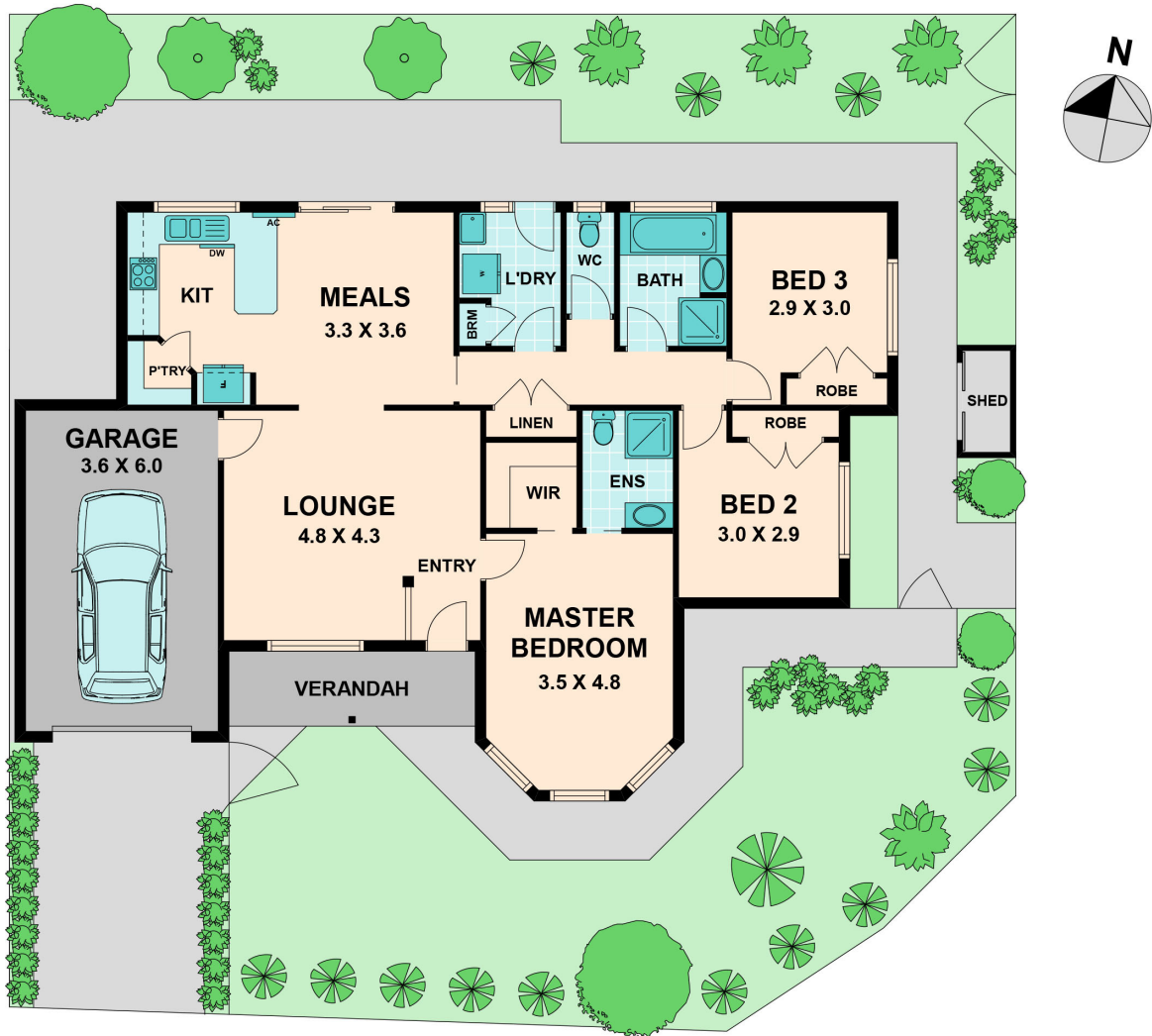
Additional property features include: ducted heating, split system and a single car garage.

Disclaimer: We have obtained all information in this document from sources we believe to be reliable; however, we cannot guarantee it's accuracy. Prospective purchasers/lessees are

Bianca L Thomas

+61 425 733 651

www.wilsonpartners.com.au



26 CHRYSTOBEL WAY

KILMORE, VIC