



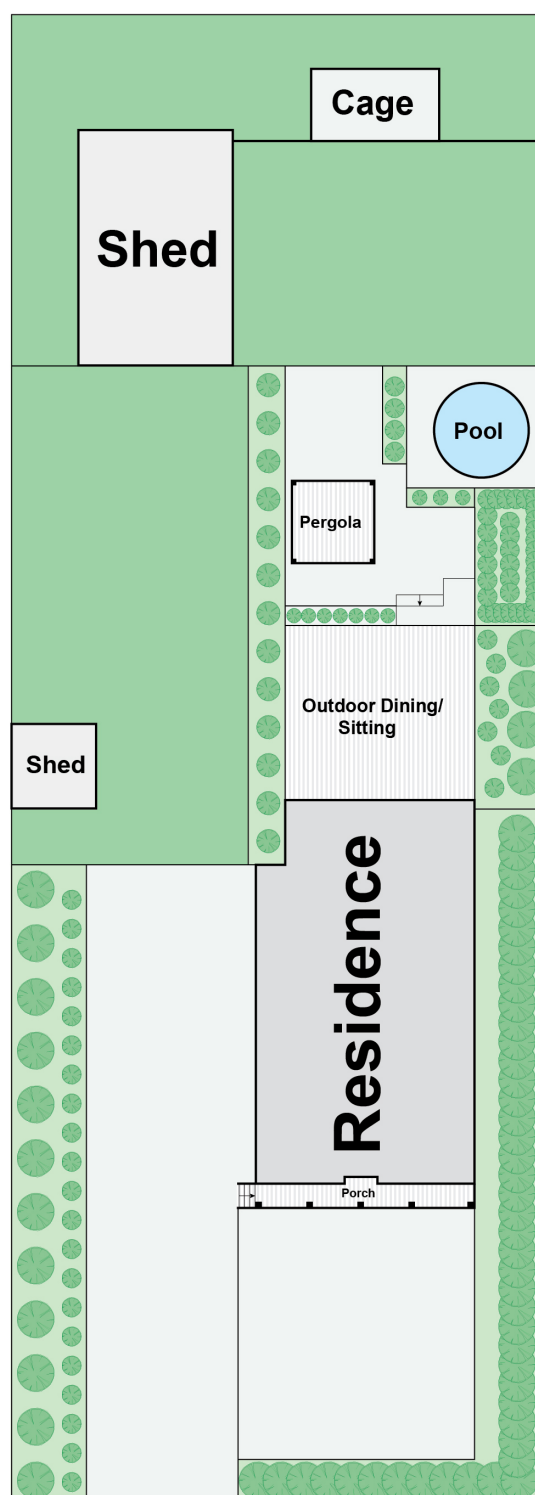
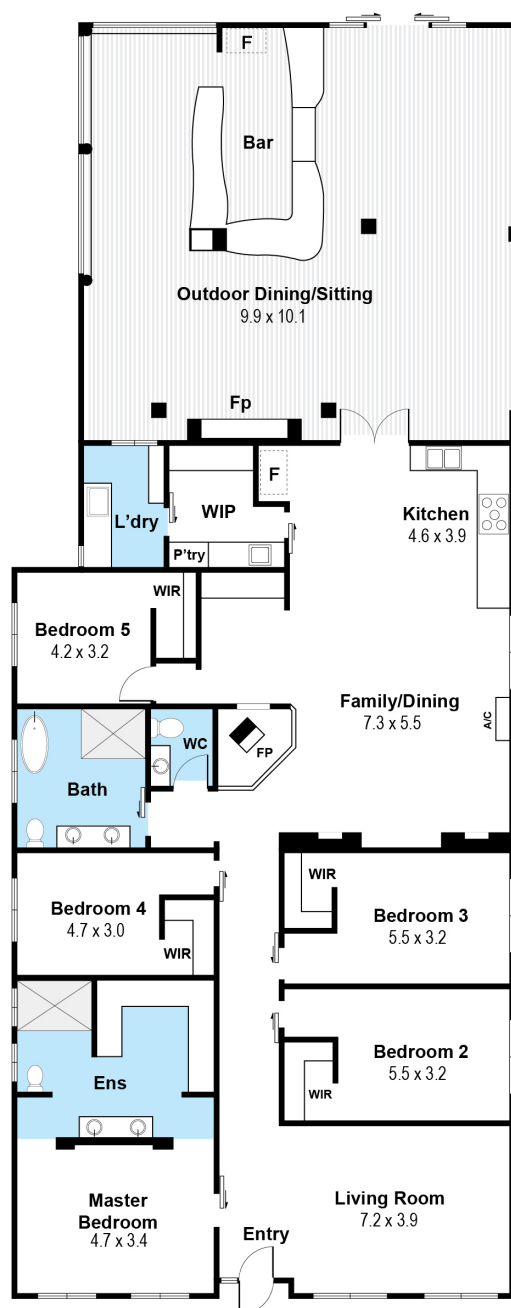
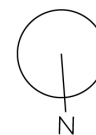
29 North Mountain Road HEATHCOTE JUNCTION,
VIC



Magnificent renovated family entertainer in a sought-after pocket

Quietly nestled on 1952sqm in a coveted pocket of Heathcote Junction, this magnificent home showcases a stunning full renovation tailored for classic family living. Embracing a modern country design finished in premium appointments, it boasts luxuriously spacious free flowing interiors that are complemented by outdoor entertaining on a grand scale.

Floorplan Scale Bar (m)



Wilson Partners

Whilst every attempt has been made to ensure the accuracy of the floor plan contained here, measurements are approximate and no responsibility is taken for any error, omission or misstatement. This plan is for information only and is not to be used for any purpose such as by any prospective purchaser or lender.

are approximate and no responsibility is taken for any error, omission or misstatement. This plan is for illustrative purposes only and should not be relied upon by any prospective purchaser or tenant.