



19 SIMONE STREET KILMORE, VIC



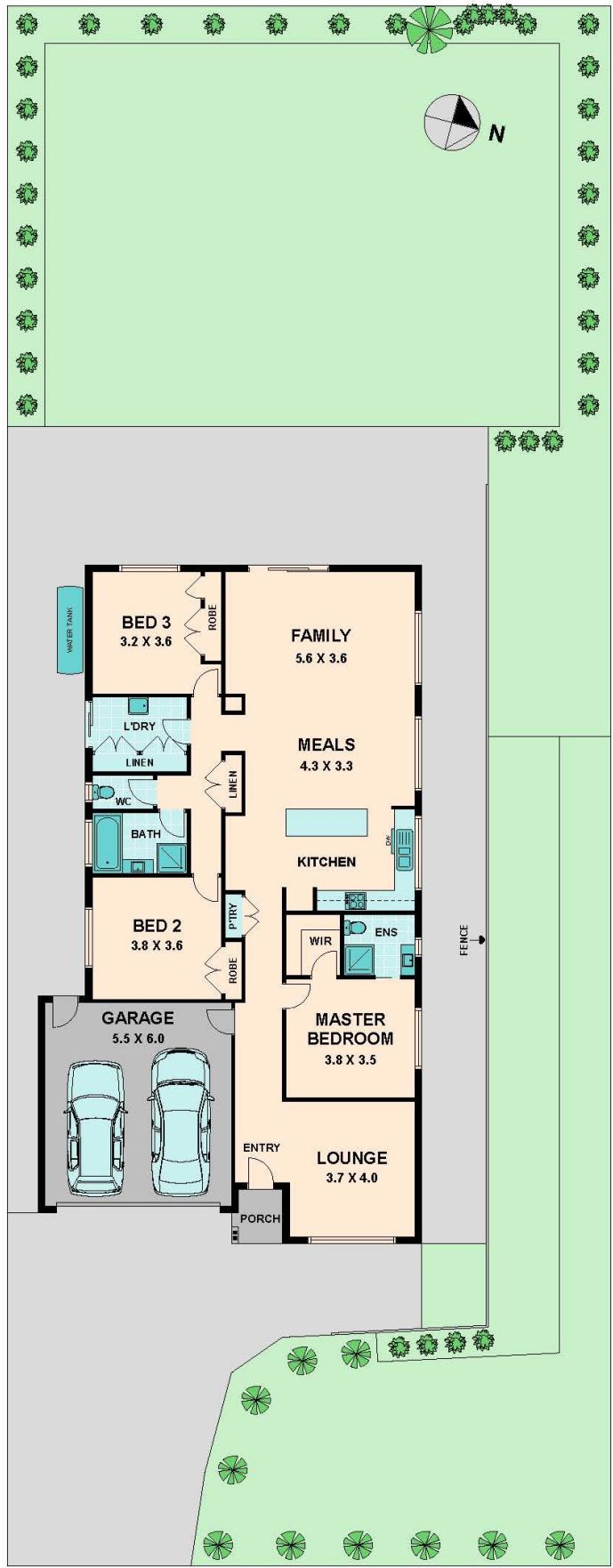
SUPERBLY SITUATED!

Superbly situated in a family friendly precinct on approximately 806m² and providing the perfect solution for first home buyers, singles, couples, families & investors alike. With interest rates at an all time low, this is the perfect time to jump off the rental market and enter the land of home ownership.

A short drive to the ring-road makes it easy for the Melbourne commute, with major amenities all in easy access, quality schooling options, public transport, recreational facilities, and Aldi are just a few turns away by car.

Bianca L Thomas

+61 425 733 651



19 SIMONE STREET

KILMORE, VIC