



300 BACK CREEK ROAD HIGH CAMP, VIC



HIGH CAMP HOUSE AND ACREAGE FOR SALE

The Heart of High Camp

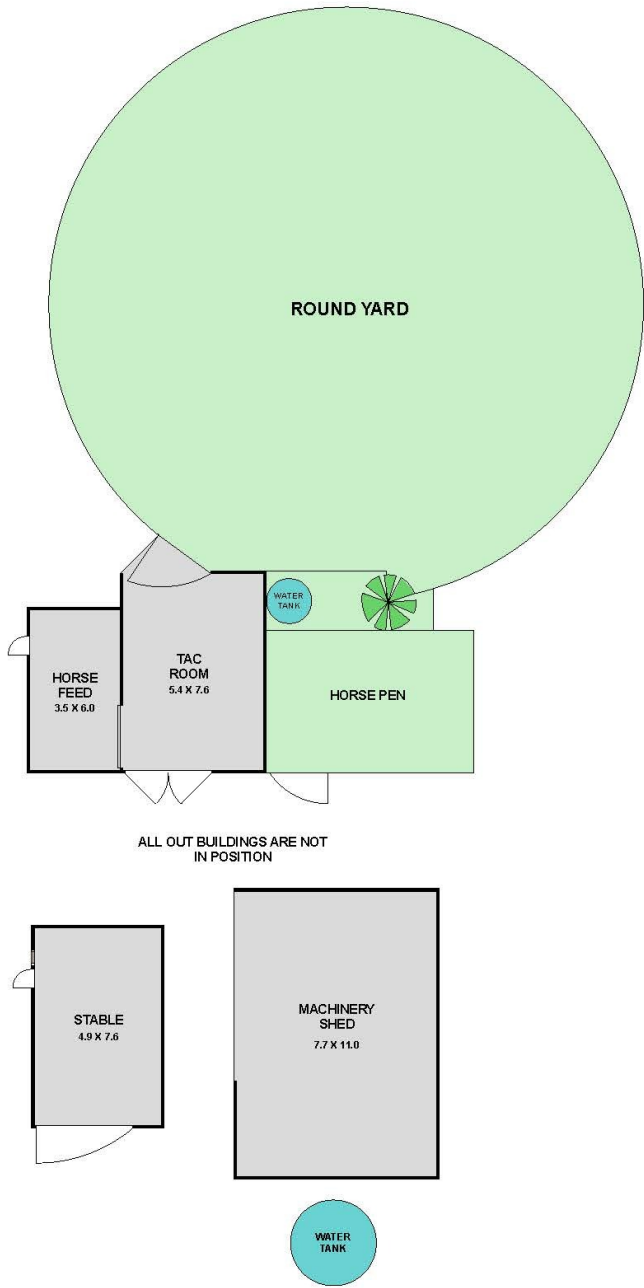
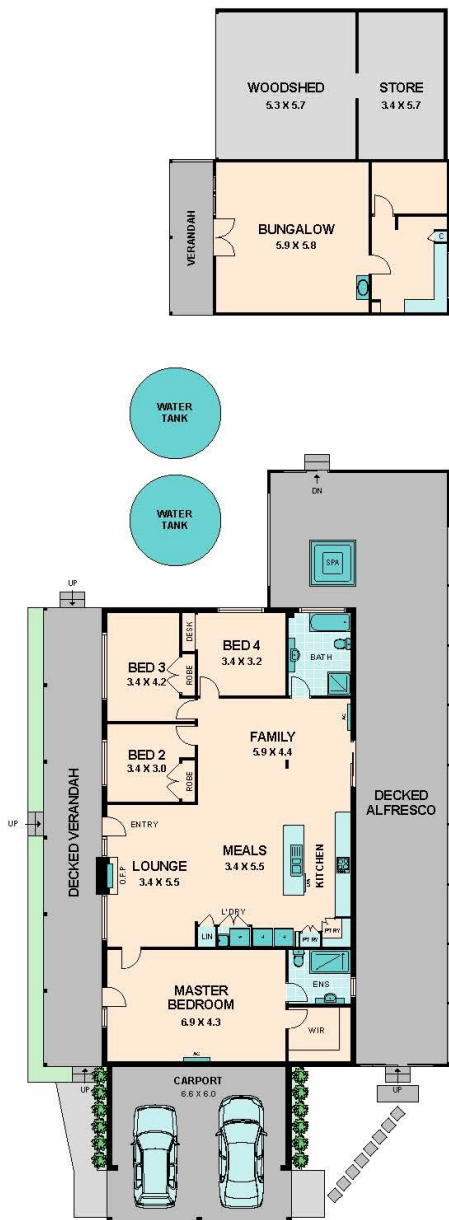
Imagine retreating each day to a magnificent home immersed in 40 acres of green rolling pasture. Here is your opportunity to do just that at 300 Back Creek Road in High Camp. Located just over an hour to Melbourne's CBD and a short 10 minute drive to the local hub in Sydney Street Kilmore, you can now take pleasure in an authentic country lifestyle with the conveniences of inner city living.

Gently meandering through leafy surrounds, is a long circular driveway that leads you to a spectacular property with all the comforts of a hearty home; 4 bedrooms, 2 bathrooms, an open plan family area and expansive verandah with incredible views. Take a plunge in the built in spa or enjoy a perfect sunset from the north-west facing deck all surrounded by acres of fenced paddocks, 3 large dams and your very own quaint private jetty. Purpose built

Alan Wilson

0417 577 988

www.wilsonpartners.com.au



300 BACK CREEK ROAD

HIGH CAMP, VIC