



SHOP 10 & 11 / 11-13 SYDNEY STREET KILMORE, VIC

KILMORE RETAIL PREMISES FOR SALE

Wilson Partners Real Estate are delighted to present a not to be missed owner-occupier or investment opportunity at Shops 10 & 11 / 11-13 Sydney Street, Kilmore VIC 3764.

Sold as a pair this two-level brick building in the middle of town presents a unique and remarkable opportunity for any investor for such incredible value.

Kilmore will be transformed into a whole new vibrant community and growth suburb, focused on new infrastructure and housing, innovation, investment and employment.

Key features of this Asset include:

- Building area: 81.60 sqm approx.
- Located in one of Kilmore's most prevalent

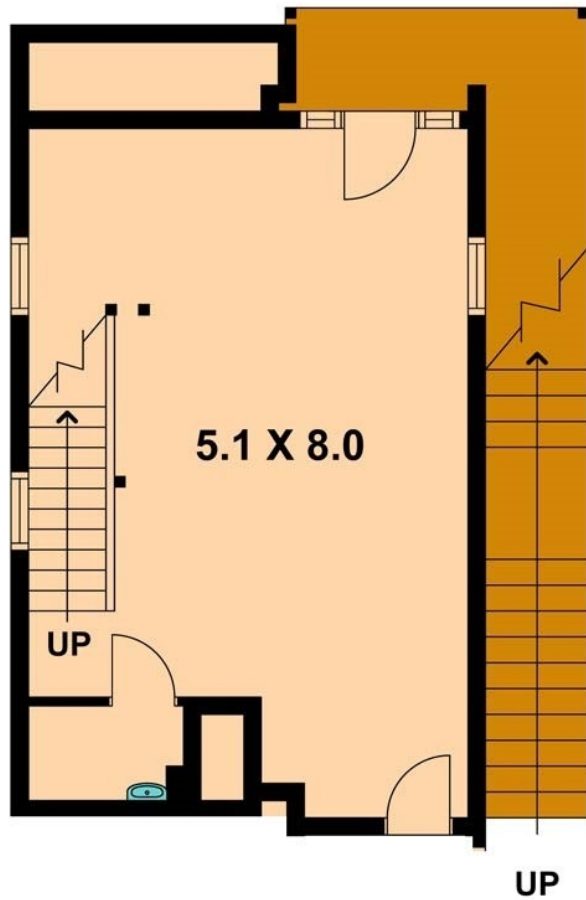
Alan Wilson

0417 577 988

Bianca Thomas

0425 733 651

40.8m² approx.
Ground Floor



40.8m² approx.
First Floor

