



36 Nightingale Road MICKLEHAM, VIC



MICKLEHAM HOUSE FOR SALE

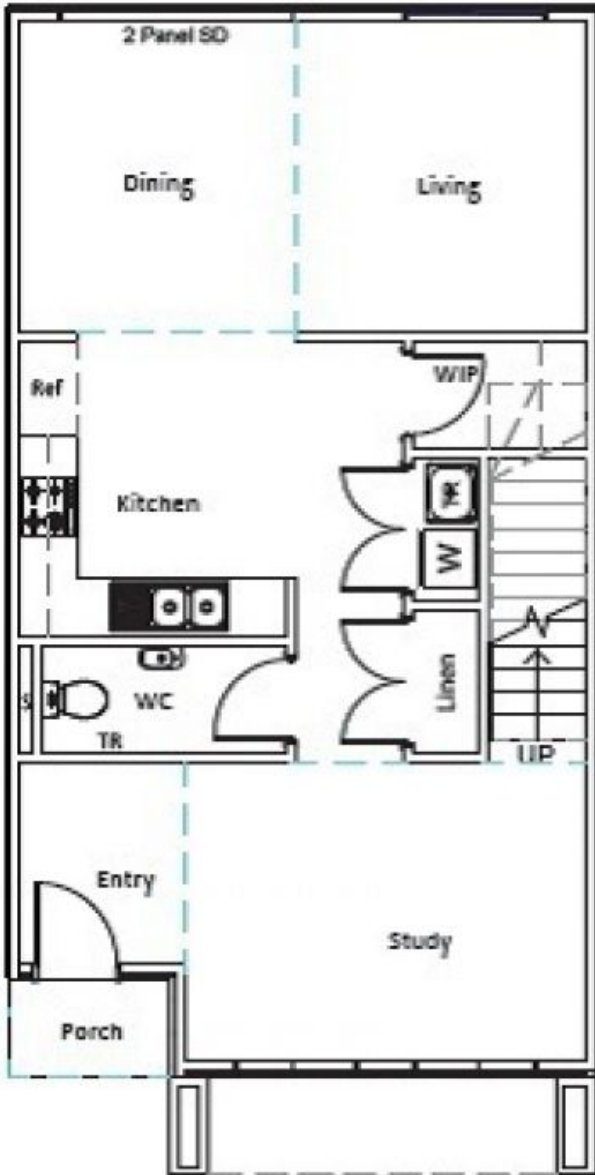
NEW - Top of Town

Set opposite the fully developed Hilltop Park at the highest point in the Merrifield Estate this brand new home with 270 degree views, individually titled and ready for occupancy.

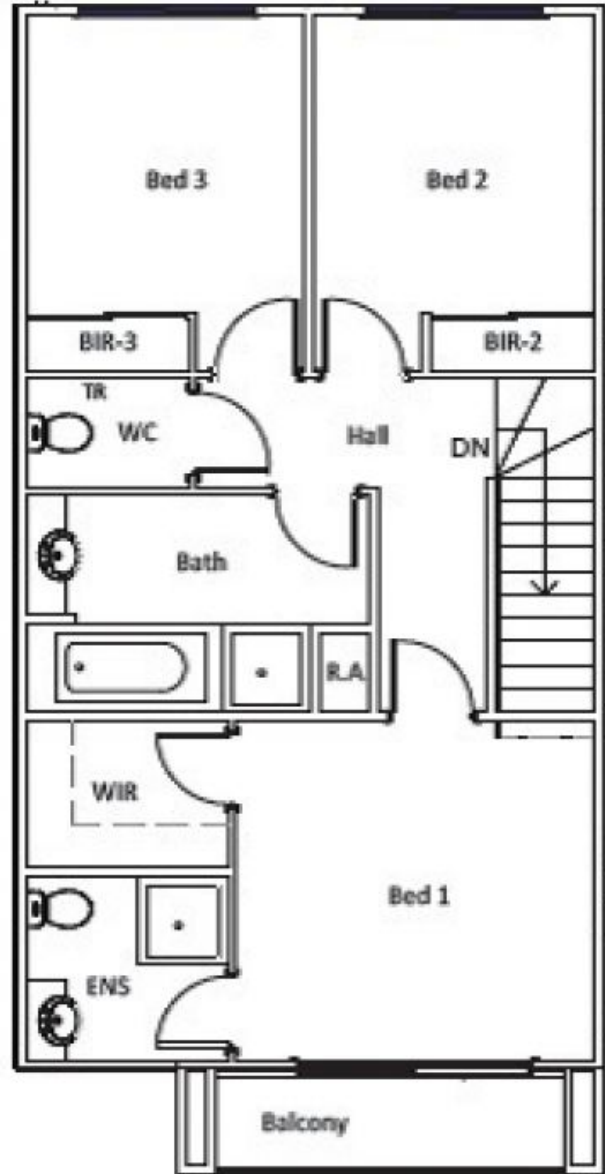
This home offers approximately 18.4sqm of modern living with three bedrooms, master with a private balcony, two and a half bathrooms, two living zones, timber staircase, stone bench tops throughout, split system heating and cooling and double lock up carport/garage accessed via the rear laneway.

Move into brand new, sit back and enjoy!

Look no further make your move to Merrifield today.



GROUND FLOOR



FIRST FLOOR