



7 Grange Drive BROADFORD, VIC



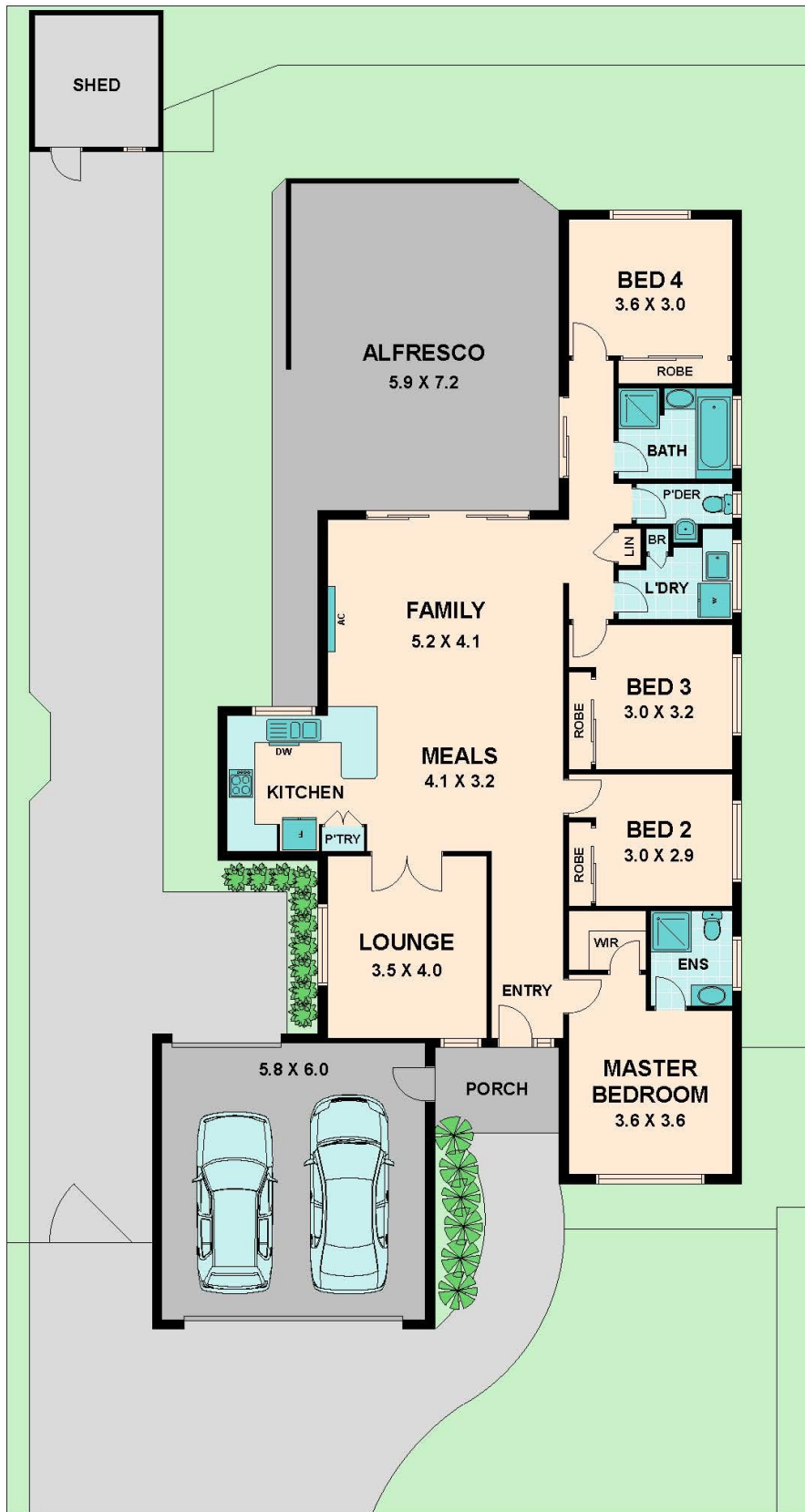
BROADFORD HOUSE FOR SALE

Set on a large allotment of approximately 594sqm in the quiet Strath Lakes Estate of Broadford is this impressive four bedroom, two bathroom home offering convenient access to the Hume freeway and only a 60 minute drive into Melbourne. Alternatively you could jump on the V-line train at Broadford station for a stress free commute of about the same duration.

For comfort the house is adorned with quality features including split system air conditioning, ducted heating, quality bathroom fixtures and wide hallways and the garage has a remote panel lift door.

Currently tenanted and receiving a great return this could also be an excellent first investment or addition to any existing portfolio.

Call Dan now for your immediate inspection.



7 Grange Drive

BROADFORD, VIC