



41 North Mountain Road HEATHCOTE JUNCTION,

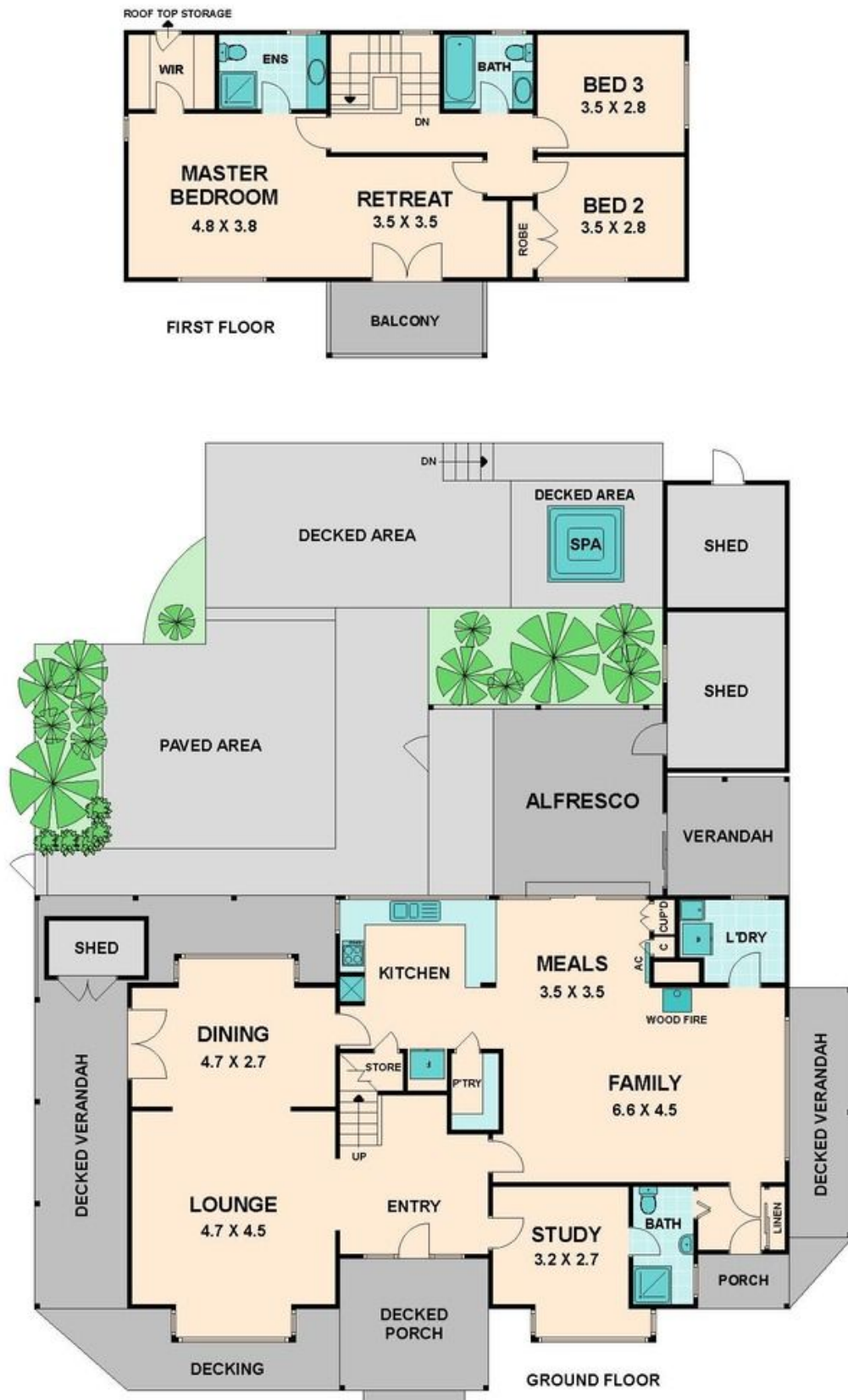


HEATHCOTE JUNCTION HOUSE FOR SALE

New England cottage on half an acre!

If you are looking for the country life style, then look no further. This double storey English style cottage home is looking for its new family. Architecturally designed with a French provincial twist, it offers all the traditional features such as beautiful bay windows, window nooks up in the attic, French doors, beautiful cornices, wooden flooring, and a wood fire to keep you cosy all year round. Situated close to Heathcote Junction railway station and the Hume freeway, the CBD is easily accessible, being only a 50 minute train ride. Within walking distance you will find the local Wandong Primary School, one of the most sought after primary schools in the local Mitchell Shire. This stunning property is set back off the street on a large (approx.) 1/2 an acre of land with established gardens at the front and rear. The formal entry leads into the large sitting and dining room, with French doors opening out onto the verandah. There is a light and bright kitchen with plenty of bench and cupboard space, a walk in pantry, wall oven, and electric appliances. An open plan family/meals area adjacent to the kitchen offers a wood fire place, split system and air-conditioning for all of your family's comfort. The down stairs living area also consist

www.wilsonpartners.com.au



41 North Mountain Road

HEATHCOTE JUNCTION, VIC