



36 SYDNEY STREET KILMORE, VIC

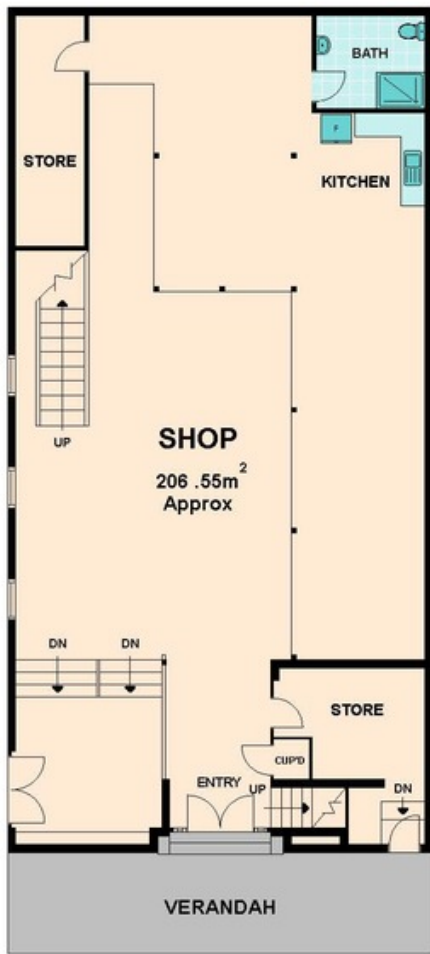


ONCE IN A LIFETIME OPPORTUNITY

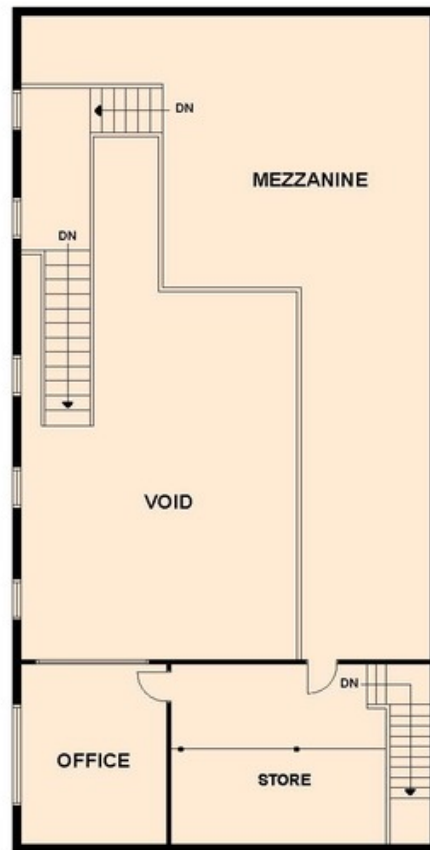
An absolute once in a lifetime opportunity to lease one of Kilmore historic buildings. This space is approximately 206.55 m², offering great shop space, kitchenette, bathroom storerooms and office space.

Bianca Thomas

0425 733 651



GROUND FLOOR



FIRST FLOOR