

660 VALLEY DRIVE HIDDEN VALLEY, VIC



4



2



2

## THE PROFILE - THE POSITION - THE PROMISE

Of all great things: Your Luck is About to Change!

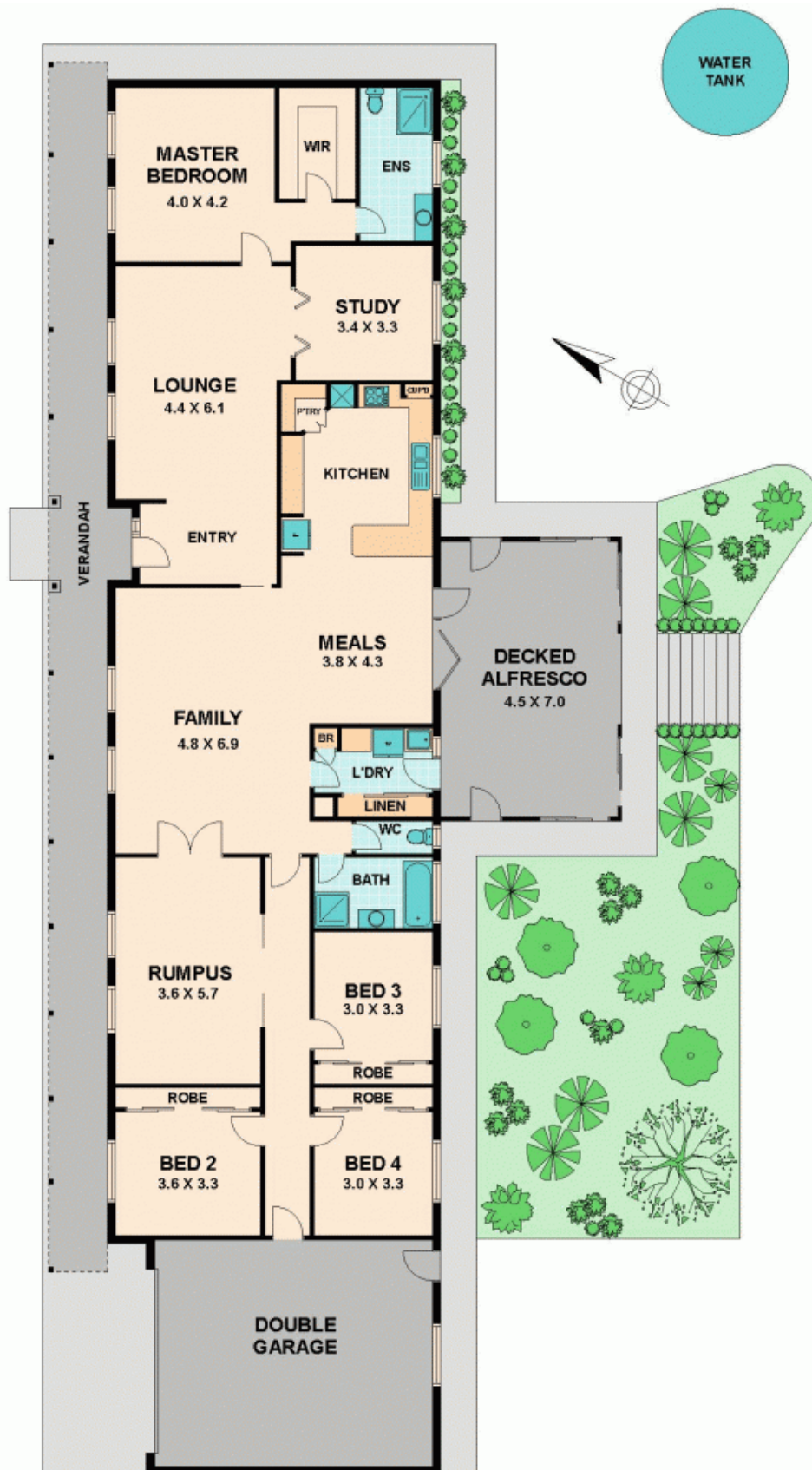
Nearly three acres approx., prestige executive home, high on the hill, four bedrooms plus study, two bathrooms, two separate living rooms, hostess kitchen, enclosed outdoor entertaining patio, views to live for, top of the range fencing, brilliant setup, absolutely nothing to be done.

And finally the PRICE IS AMAZING.

Contact Denise Smith JP 0410 516 727 or 5783 2233.

**Bianca Thomas**

0425 733 651



660 VALLEY DRIVE HIDDEN VALLEY, VIC

Wilson Partners