



27 PAULINE WAY KILMORE, VIC



WAITING FOR YOU!

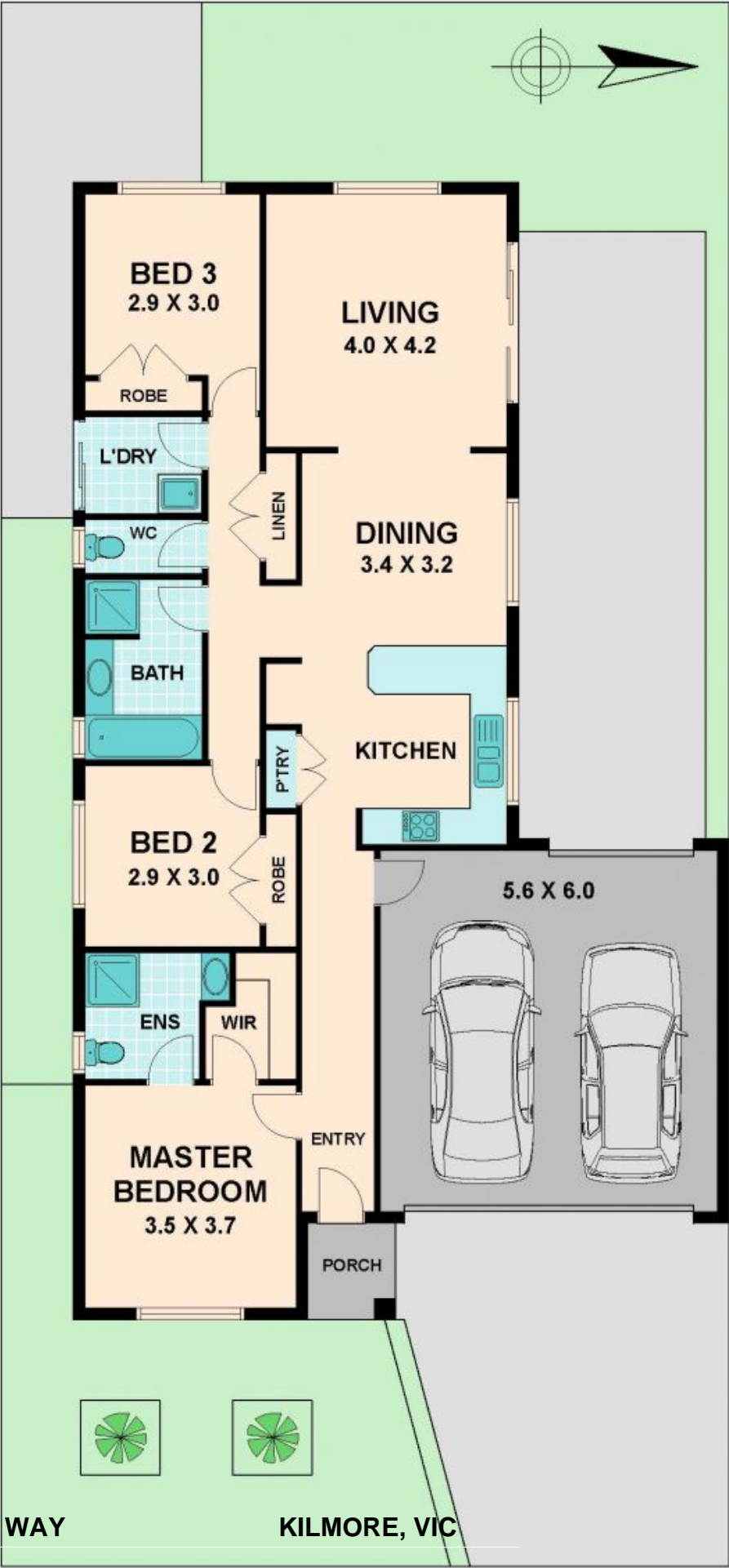
Located in one of Kilmore's new estates, this home could be yours today. The home comprises main bedroom with walk-in robe and ensuite, built-in robes to the remaining bedrooms, main bathroom with separate toilet and laundry. Open plan lounge, kitchen and dining areas. Other features include stainless steel appliances, dishwasher, ducted heating and split system as well as solar hot water.

A double garage with rear roller door access and neatly landscaped front garden. The only thing missing is you. Call today for an inspection.

Alan Wilson

0417 577 988

www.wilsonpartners.com.au



27 PAULINE WAY

KILMORE, VIC